

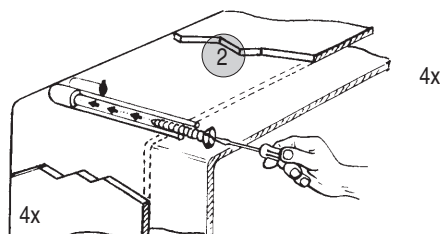
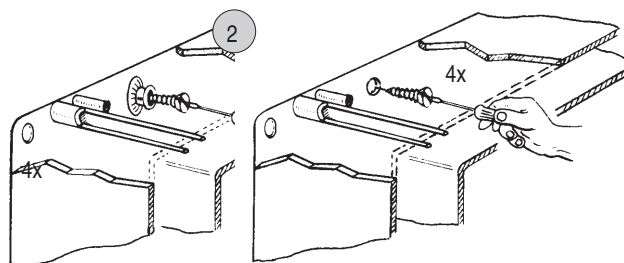
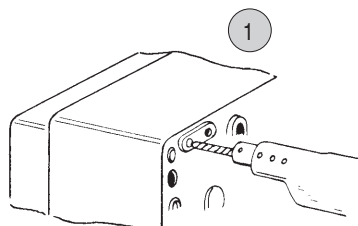
# ARIA

## IP 54/65/66\*

Direct wall mounting  
Montage mural direct  
Direkte Wandbefestigung  
Montaje directo  
Montagem directa  
Fissaggio diretto a muro  
Direkte wandbevestiging

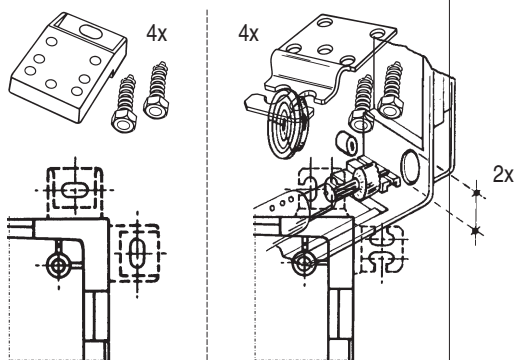


300x200/400x300/500x400/600x400 - Ø6mm  
700x500/800x600/1000x800 - Ø8mm



\* depending on the door/locking mechanism as reported in the catalog

Wall fixing lugs  
Pattes de fixation  
Befestigungslaschen  
Soportes de fijación  
Suportes de fixação  
Piedini di fissaggio  
Bevestigingsvoetjes

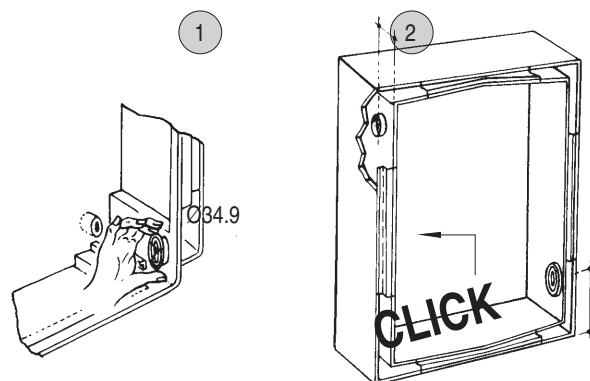


Air vent  
Aérateur  
Belüftungskappe  
Aireadores  
Ventiladores  
Aeratori  
Ventilatioerooster

## IP 34

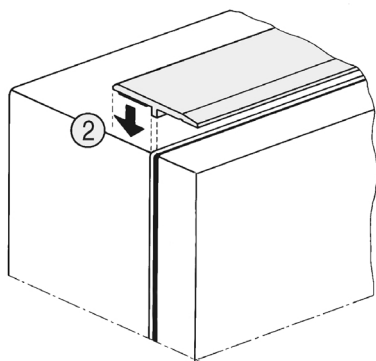
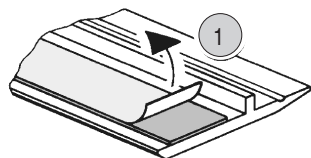
	A	B
400x300	45	43
500x400	45	43
600x400	45	43
700x500	80	55
800x600	80	55
1000x800	80	55

B

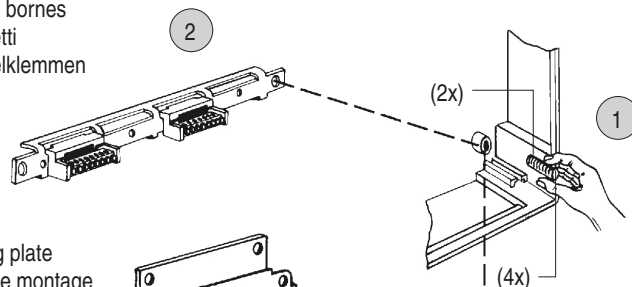


A

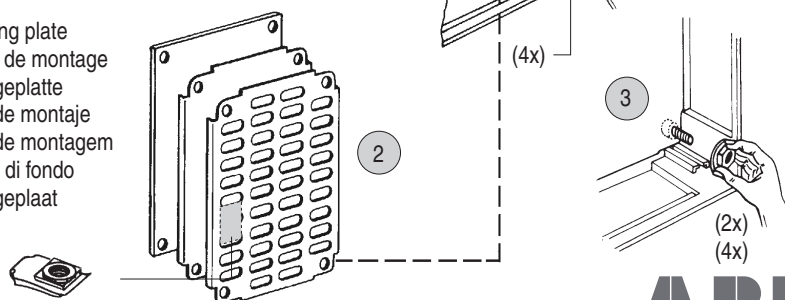
## IP 66



Rail for terminal blocks  
Barrette pour clames de raccordement  
Tragschiene für Klemmen  
Barra para bornes terminales  
Baramento para bornes  
Barra per morsetti  
Rail voor verdeelklemmen



Mounting plate  
Platine de montage  
Montageplatte  
Placa de montaje  
Placa de montagem  
Piastra di fondo  
Montageplaat

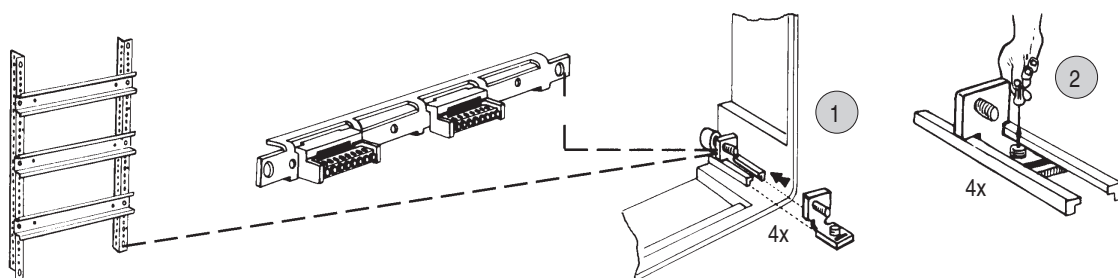


Mounting frame  
Châssis  
Montagerahmen  
Chassis

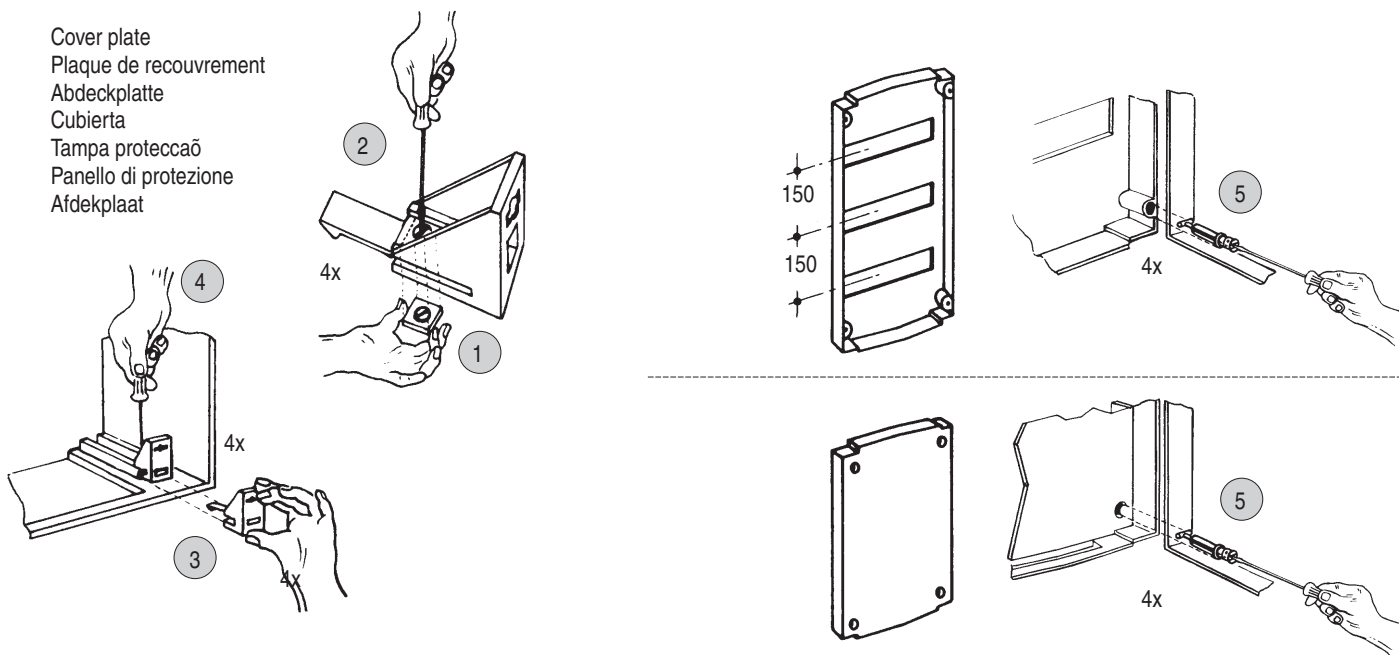
Chassis  
Chassis  
Montageraam

Rail for terminal blocks  
Barrette pour clames de raccordement  
Tragschiene für Klemmen  
Barra para bornes terminales

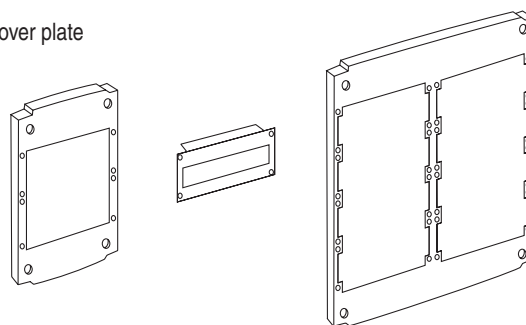
Barramento para bornes  
Barra per morsetti  
Rail voor verdeelklemmen



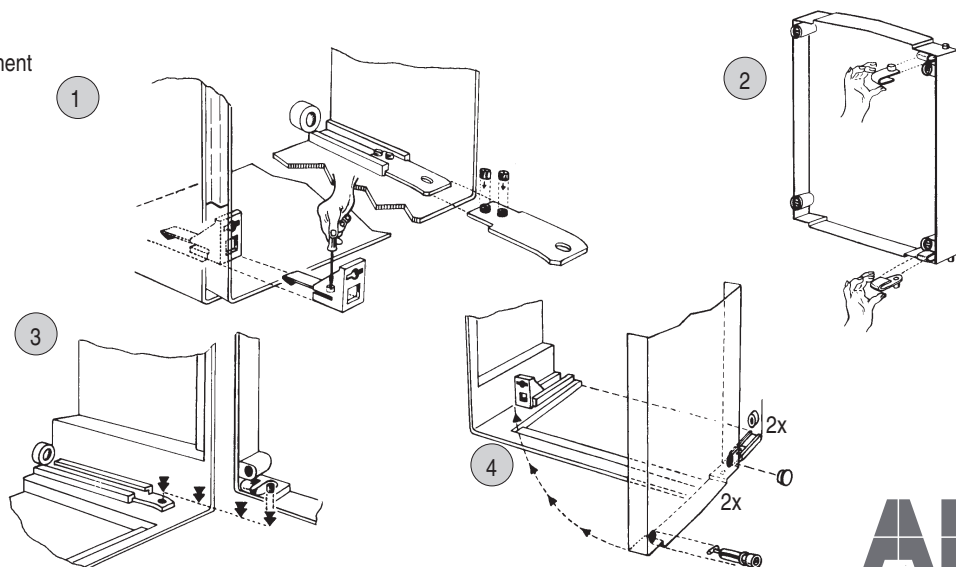
Cover plate  
Plaque de recouvrement  
Abdeckplatte  
Cubierta  
Tampa protecção  
Pannelo di protezione  
Afdekplaat



Individual modular cover plate



Hinges for cover plate  
Charnières pour plaque de recouvrement  
Scharniere für Abdeckplatte  
Charuelas para cubiertas  
Dobradiças para tampas protecção  
Cerniere per piastre di protezione  
Scharnieren voor afdekplaat



ABB