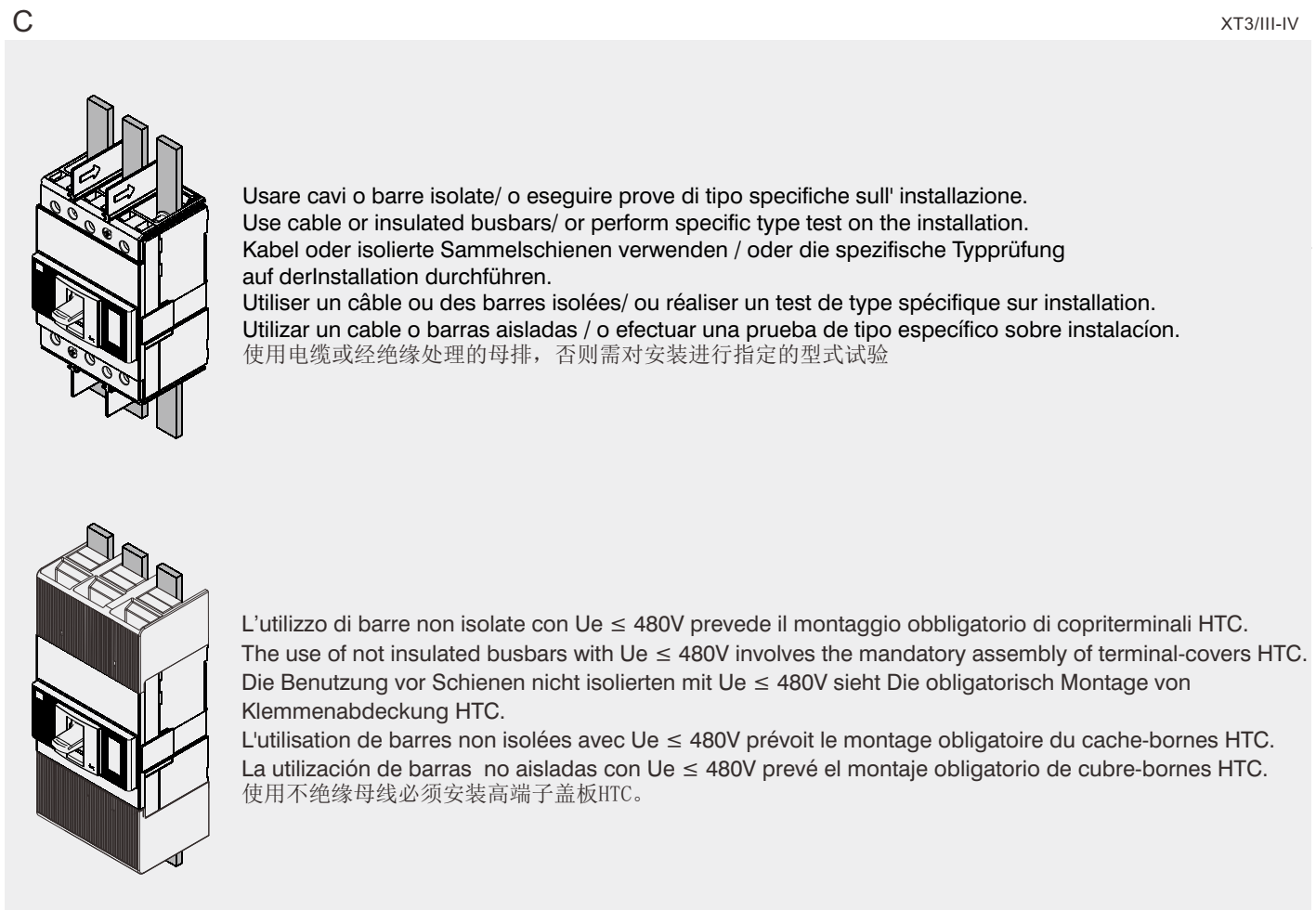
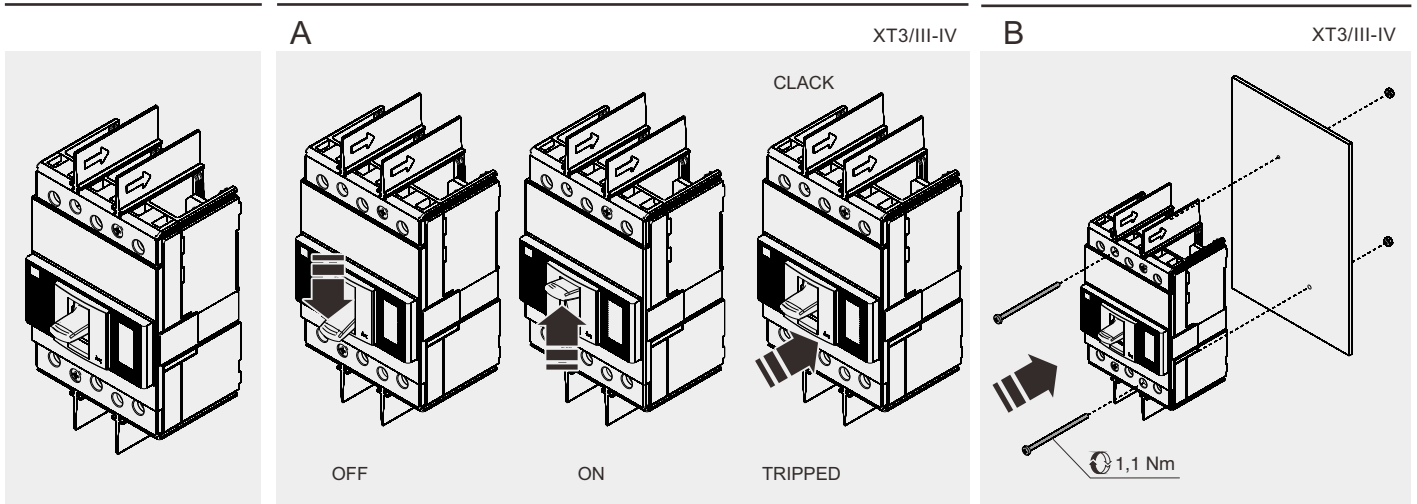
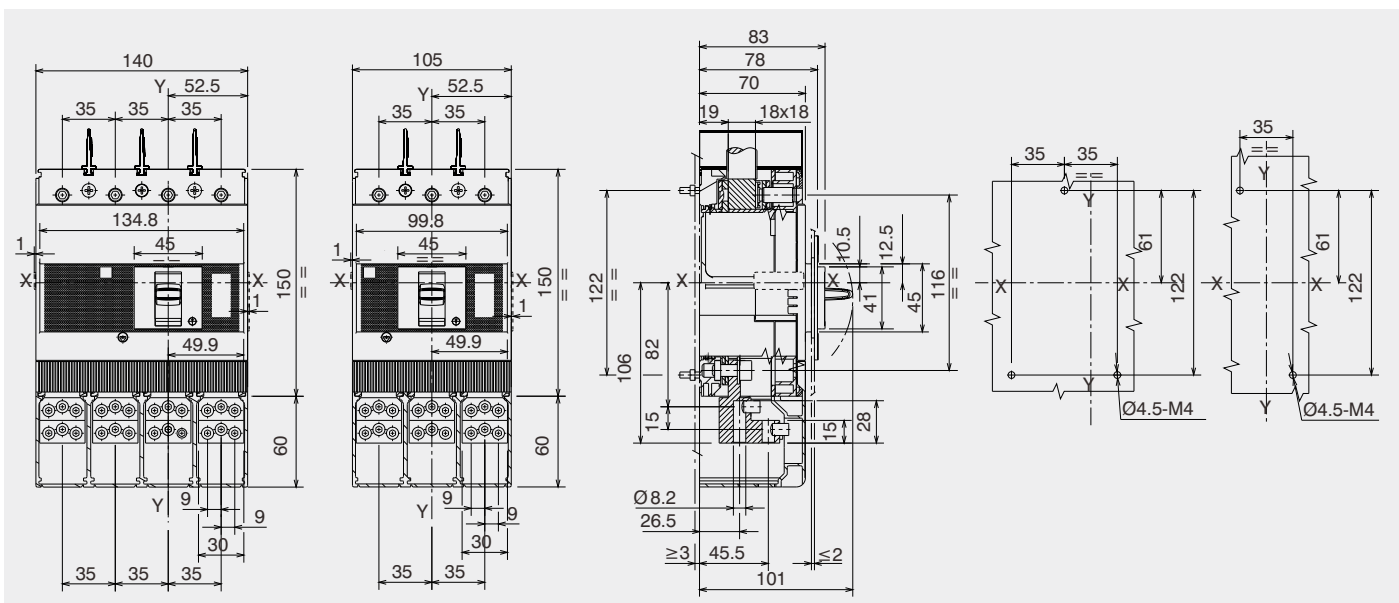
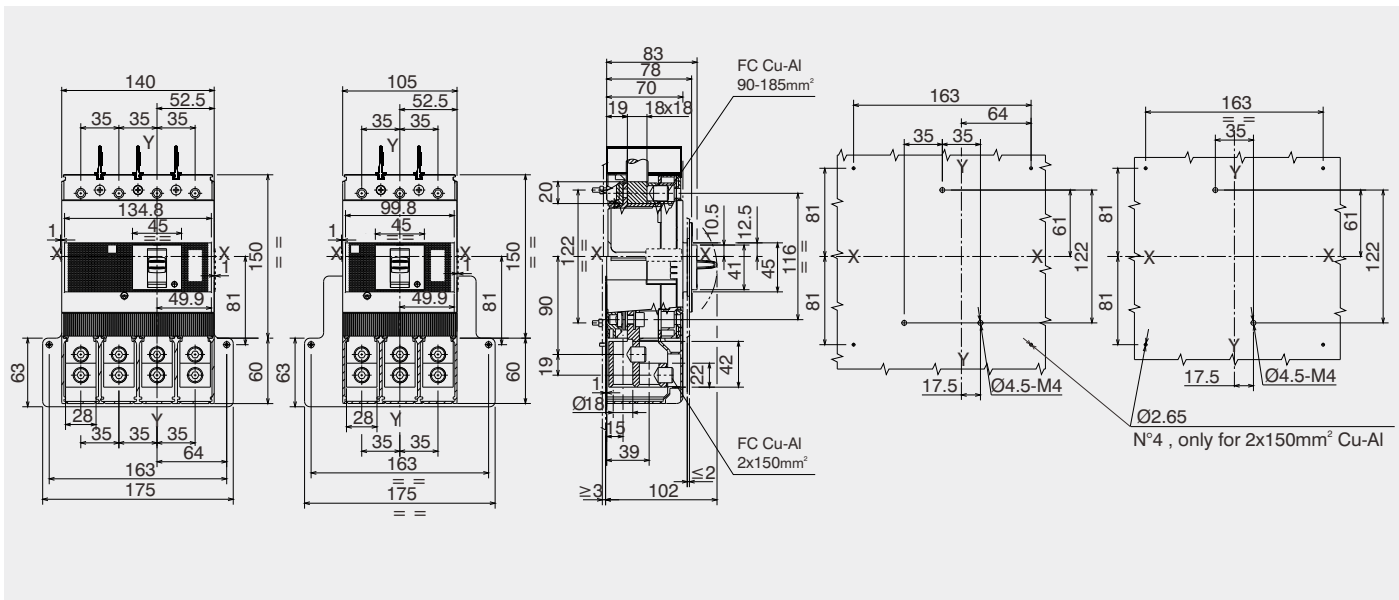
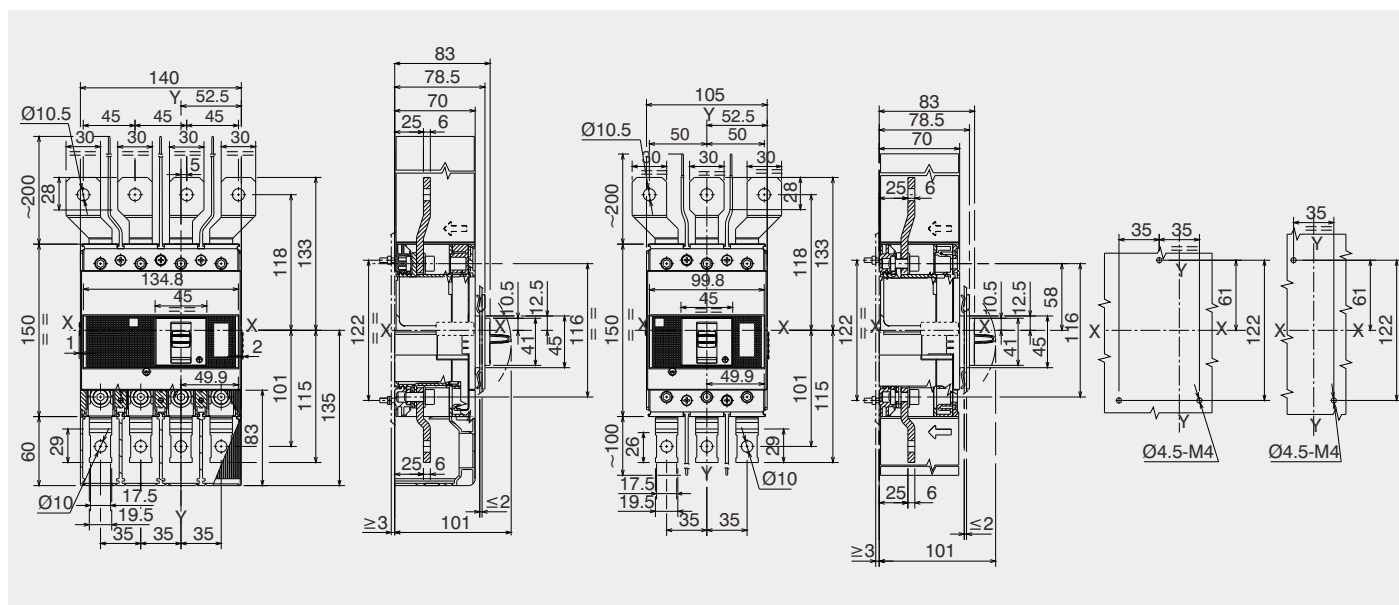


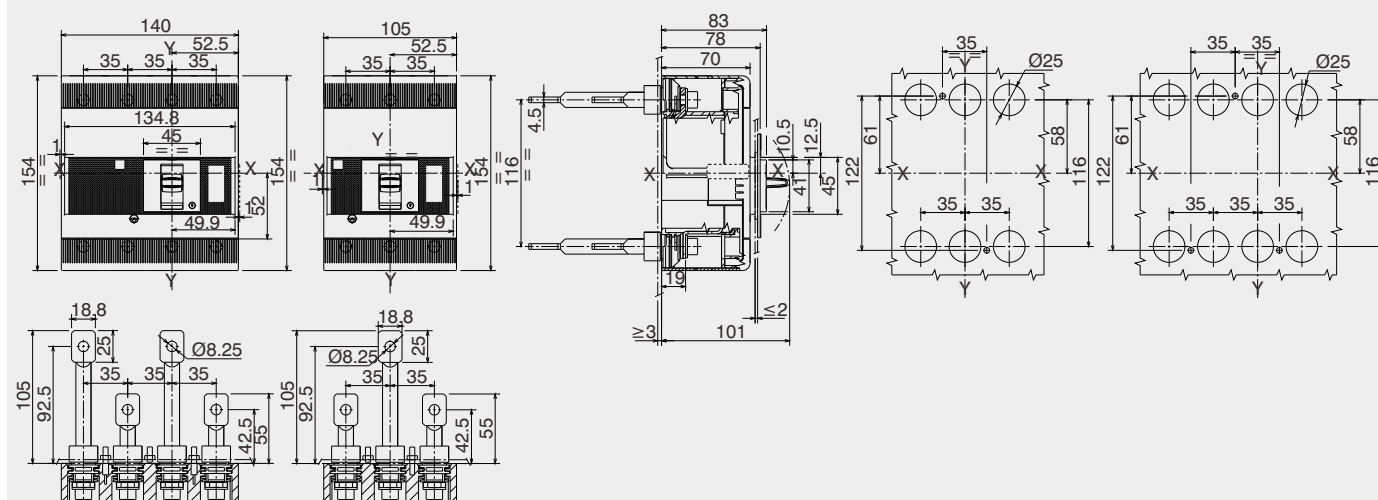
# SACE Tmax XT

Istruzioni di installazione XT3  
 Installation instructions XT3  
 Installationsanleitung XT3  
 Instructions pour l'installation XT3  
 Instrucciones de instalación XT3  
 安装说明书 XT3

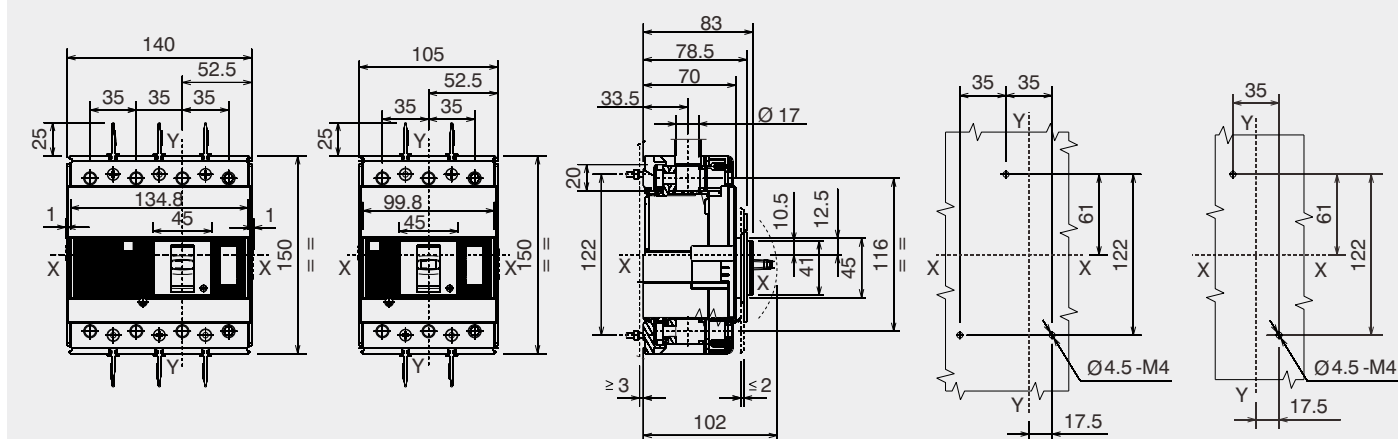






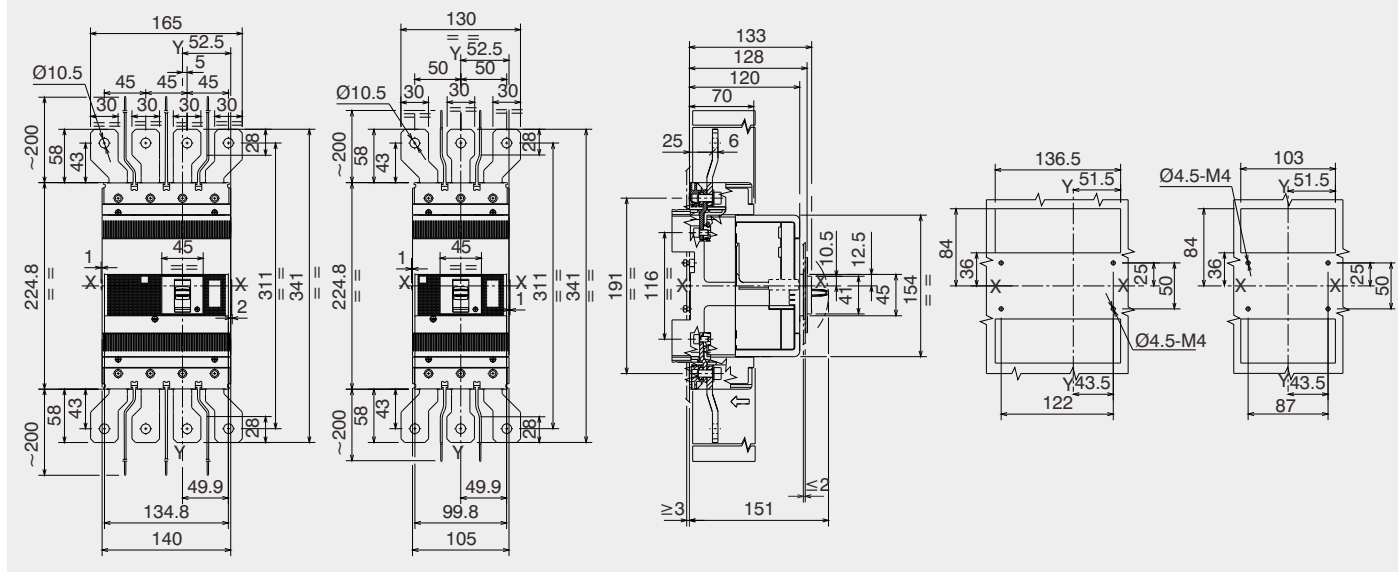


J

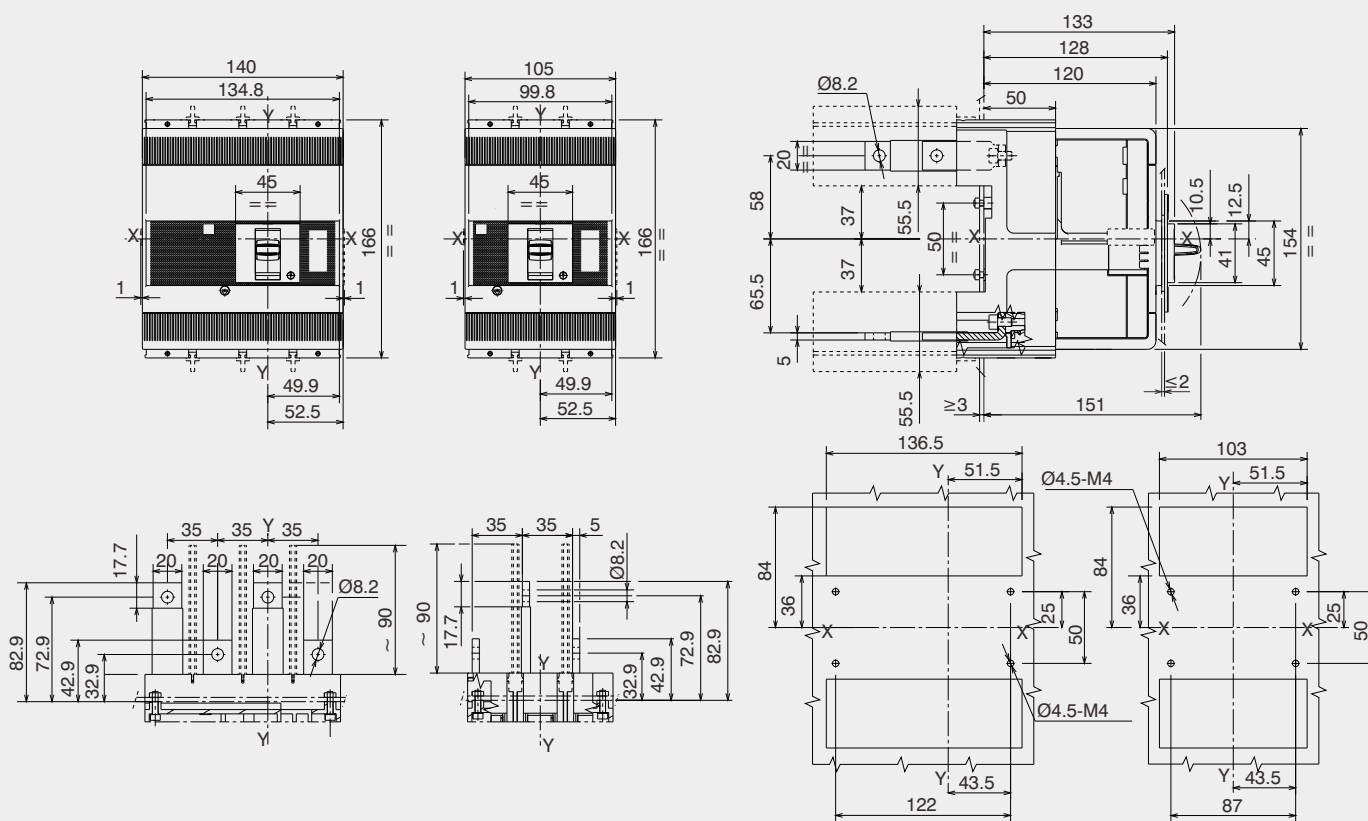
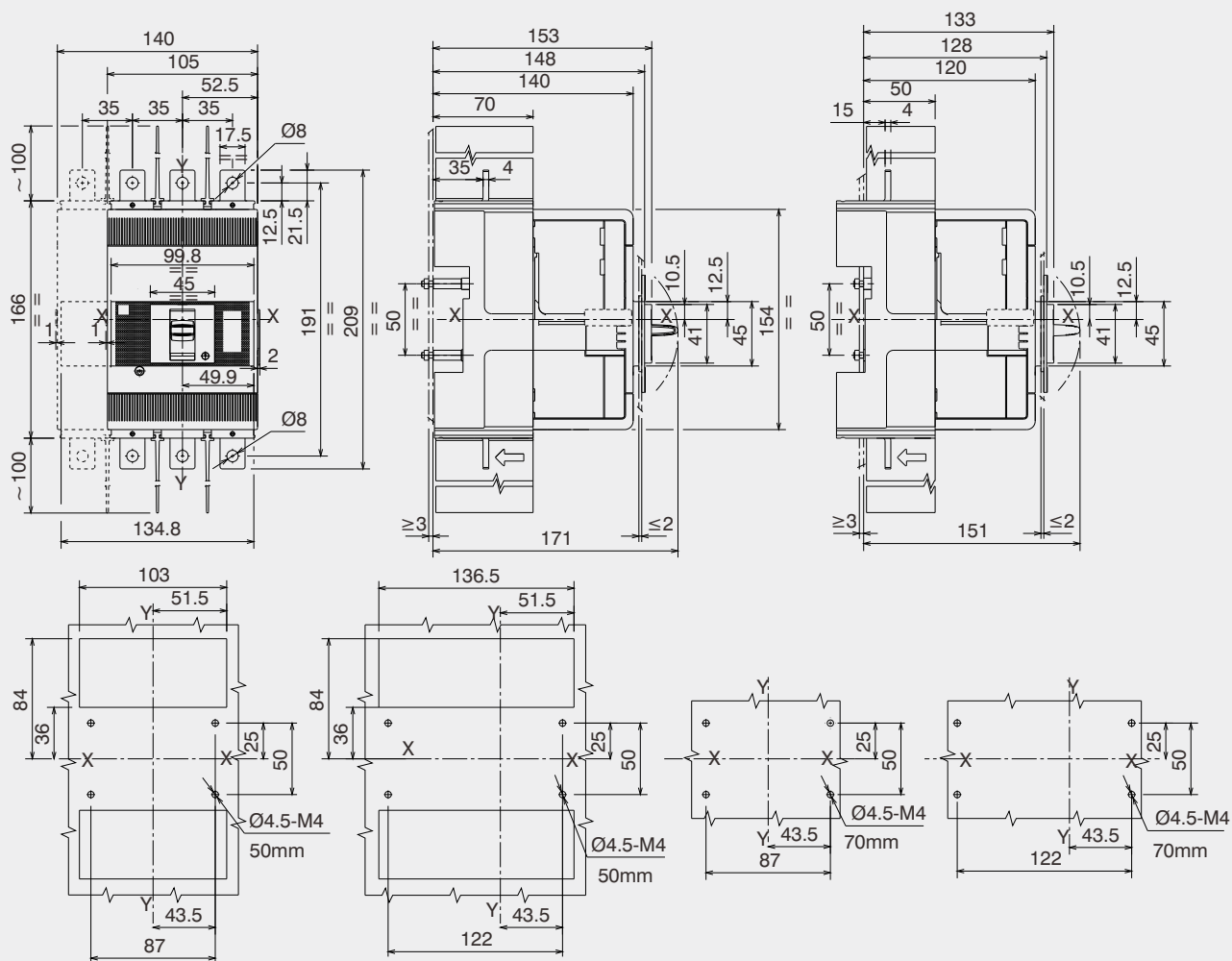
XT3-P/III-IV/Fc-Cu Al 30-150mm<sup>2</sup>

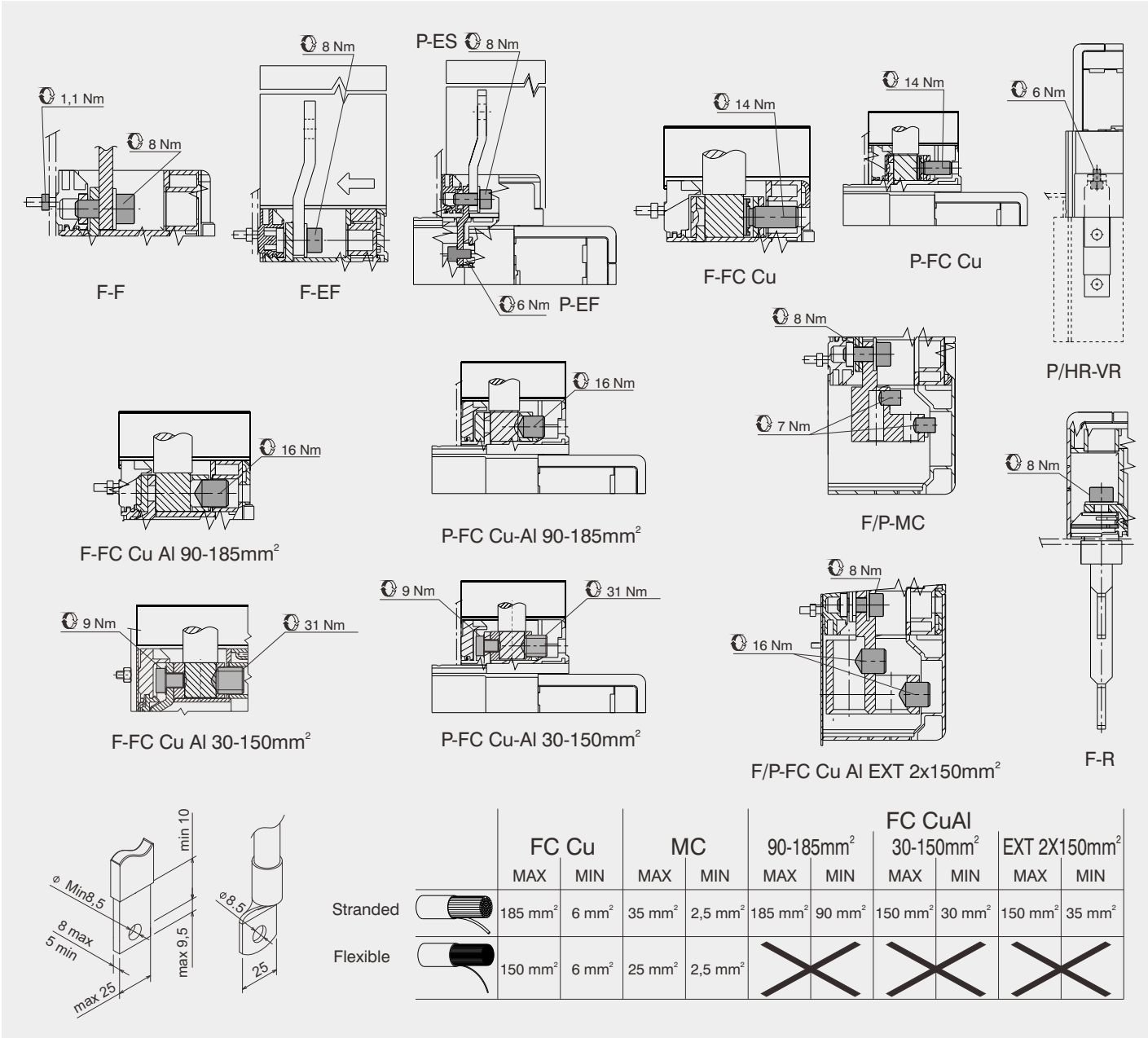
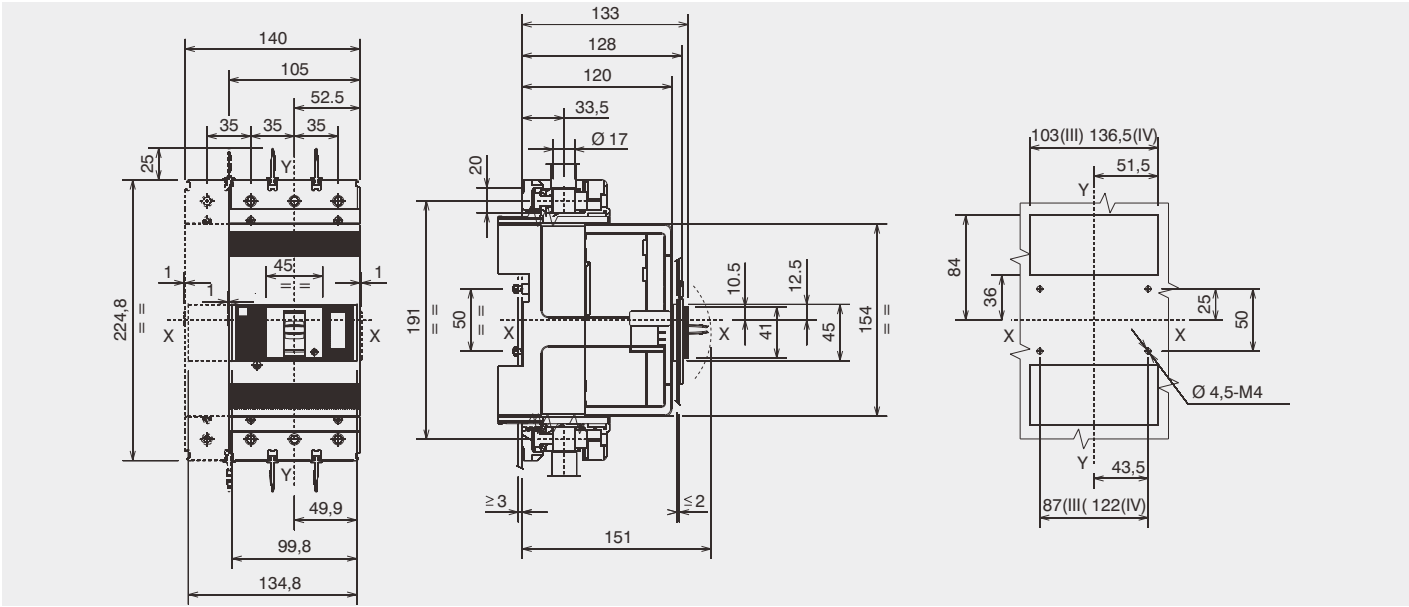
K

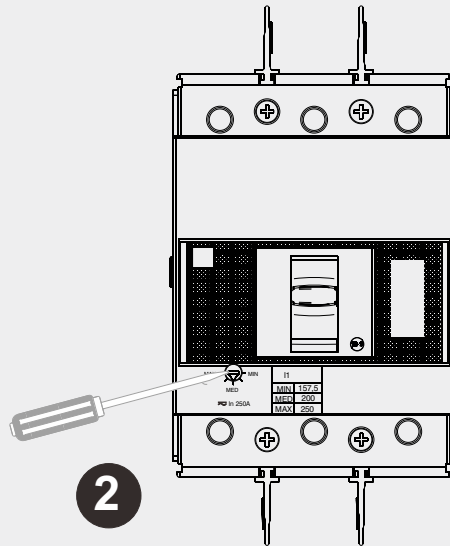
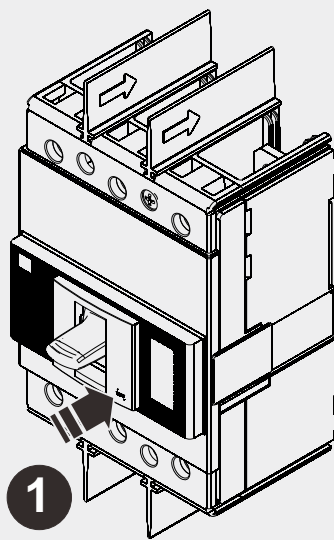
XT3-P/III-IV/ES











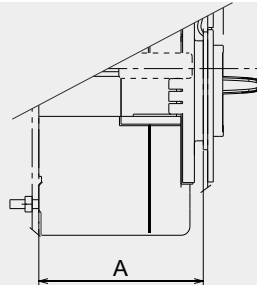
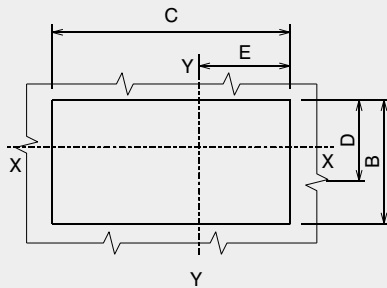
TMD/TMG

In	I <sub>t</sub>		
	MIN (0,7)	MED (0,85)	MAX (1xIn)
63	44,1	53,5	63
80	56	68	80
100	70	85	100
125	87,5	106,2	125
160	112	136	160
200	140	170	200
250	175	212,5	250

MA

In	I <sub>t</sub>		
	MIN (Inx6)	MED (Inx9)	MAX (Inx12)
100	600	900	1200
125	750	1125	1500
160	960	1440	1920
200	1200	1800	2400

## T



XT3 WITH FLANGE CON MOSTRINA		F	A		B	C	D	E
			P					
		50mm	70mm					
	III	74	124	144	55	110	17,5	55
IV	74	124	144	55	145	17,5	55	
OPTIONAL FLANGE III-IV	79	129	149	73	57	26,5	28,5	

XT3 WITHOUT FLANGE SENZA MOSTRINA		A			B	C	D	E
		F	P					
			50mm	70mm				
	III-IV	79	129	149	43	47	11,5	23,5
III	71	121	141	47	102	13,5	51	
IV	71	121	141	47	137	13,5	51	

