

SACE Tmax XT

FC CuAl - Terminali anteriori per cavi in rame - alluminio XT1-XT2-XT3-XT4

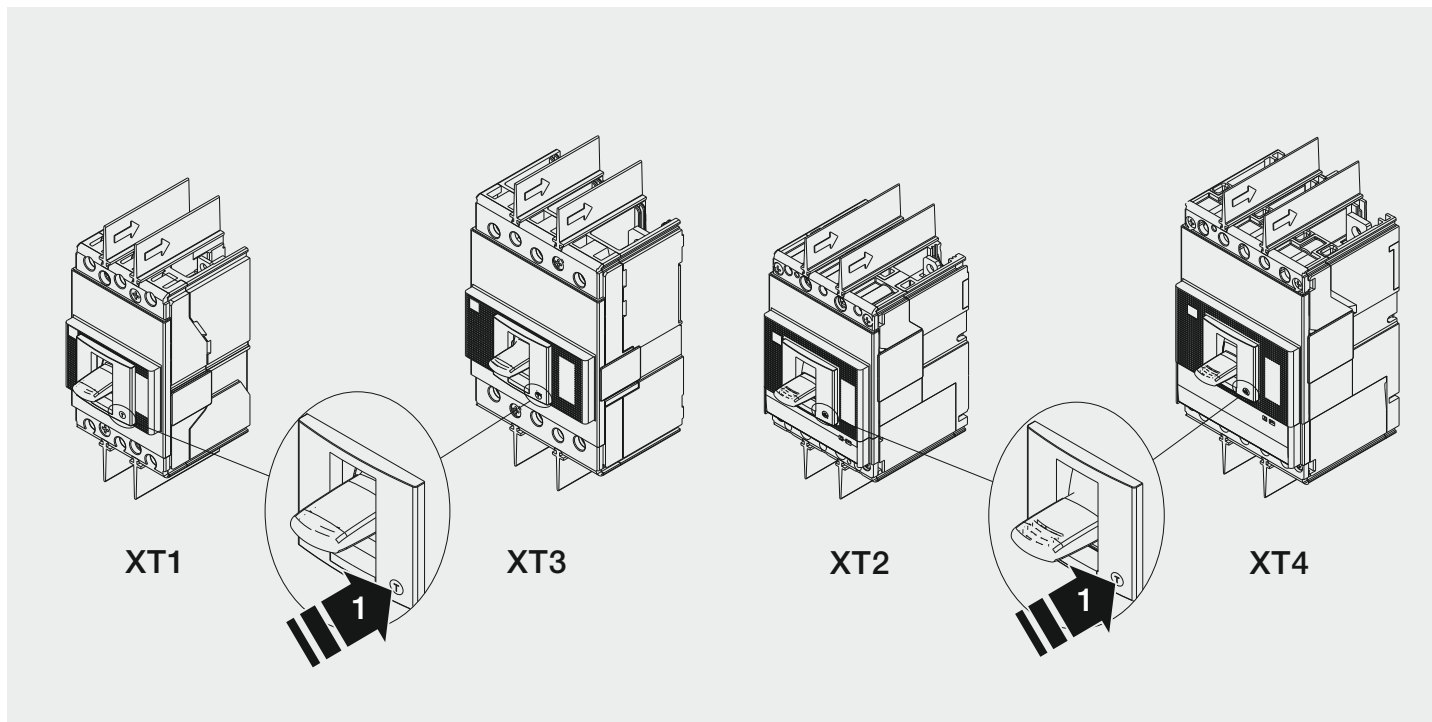
FC CuAl - Front terminals for copper-aluminum cables XT1-XT2-XT3-XT4

FC CuAl - Vorderseitige Anschlüsse für Kabel aus Kupfer - Aluminium XT1-XT2-XT3-XT4

FC CuAl - Prises avant pour câbles en cuivre - aluminium XT1-XT2-XT3-XT4

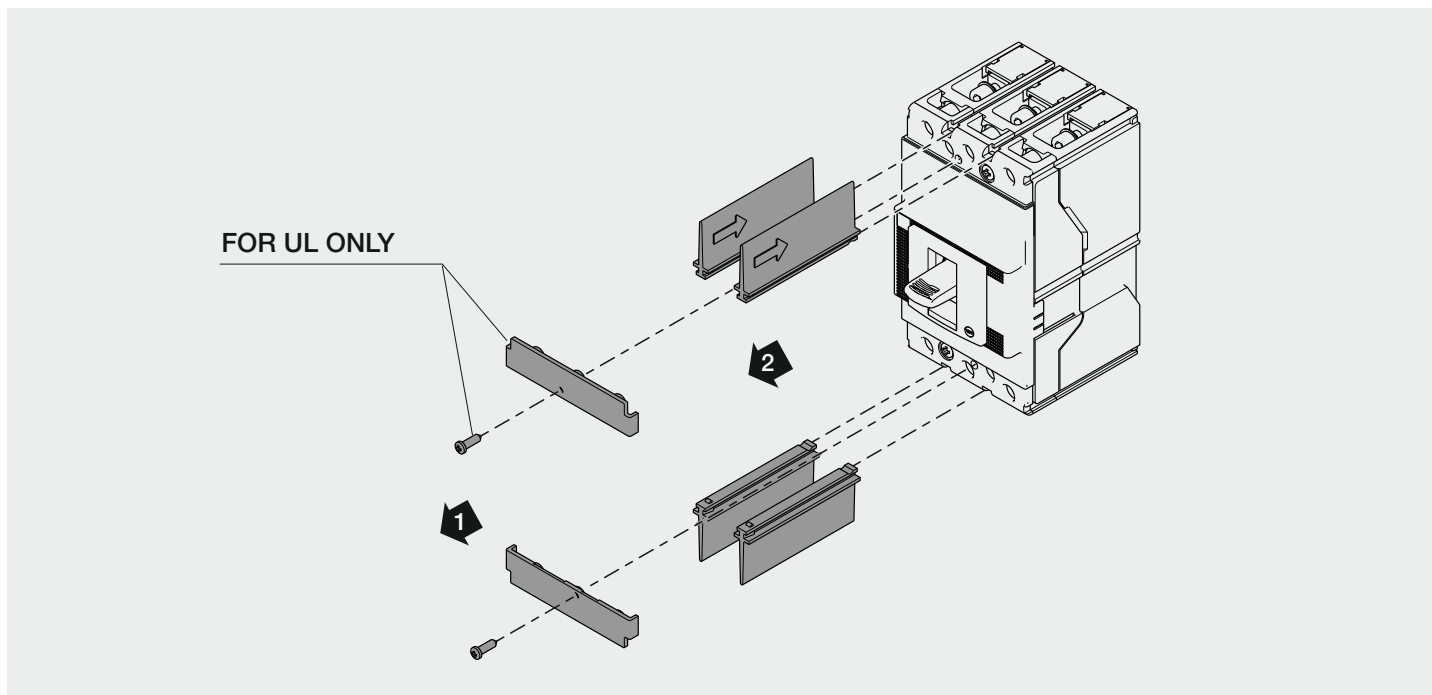
FC CuAl - Terminales frontales para cables de cobre - aluminio XT1-XT2-XT3-XT4

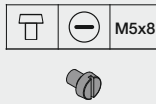
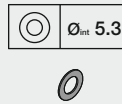
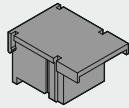
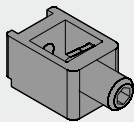
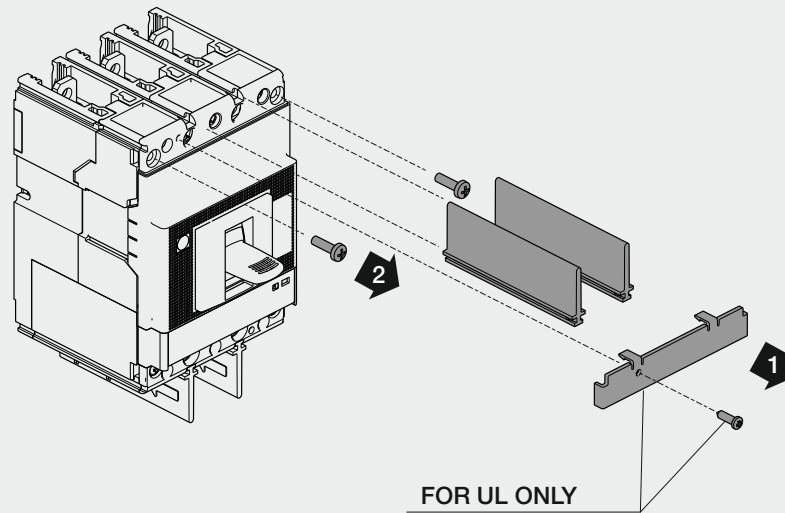
XT1-XT2-XT3-XT4



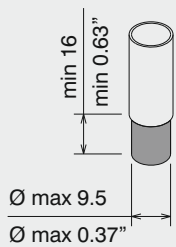
1

ONLY FOR XT1 - XT3 F

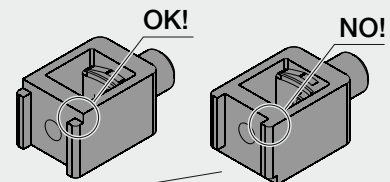
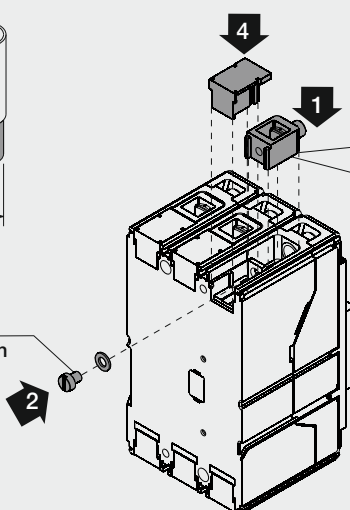




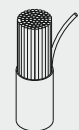
III	3(6)	3(6)	3(6)	3(6)
IV	4(8)	4(8)	4(8)	4(8)



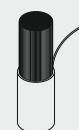
3 3 Nm
26.5 lb in



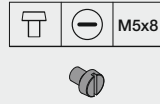
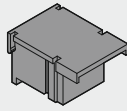
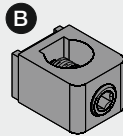
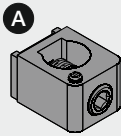
Cu-Al
Stranded



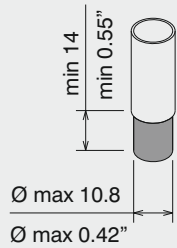
Cu-Al
Flexible



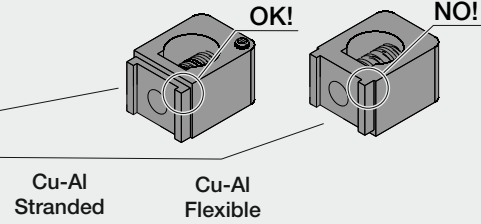
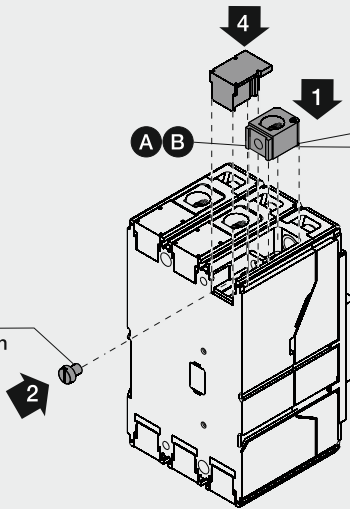
MAX	70 mm ²	MAX	50 mm ²	1.5 mm ² ...10 mm ² = 2.5 Nm / 22.1 lb in
MIN	1.5 mm ²	MIN	1.5 mm ²	16 mm ² ...70 mm ² = 5 Nm / 44.2 lb in



III	3	3(6)	3(6)	3(6)
IV	4	4(8)	4(8)	4(8)

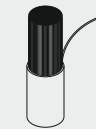
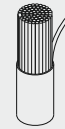


3 3.4 Nm
30.1 lb in

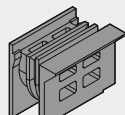
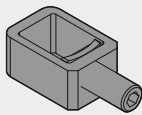


Cu-Al
Stranded

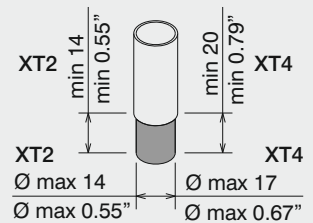
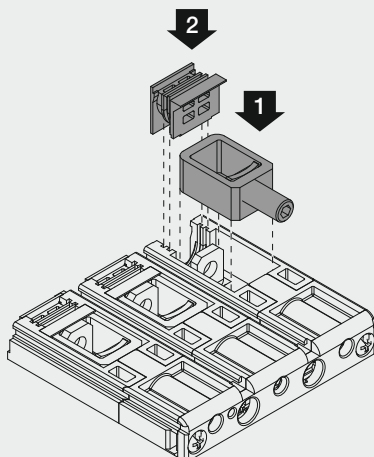
Cu-Al
Flexible



MAX	2/0AWG		10AWG...8AWG = 4.5Nm / 40 lb in
MIN	10AWG		6AWG...2/0AWG = 9Nm / 80 lb in
MAX	70mm ²		4mm ² ...6mm ² = 4.5Nm / 40 lb in
MIN	4mm ²		10mm ² ...70mm ² = 9Nm / 80 lb in

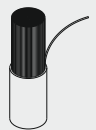
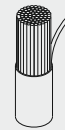


III	3(6)	3(6)
IV	4(8)	4(8)

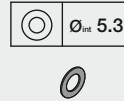
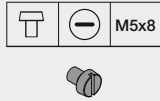
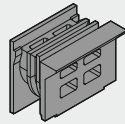
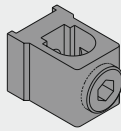


Cu-Al
Stranded

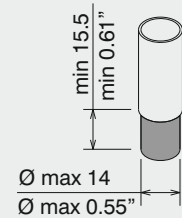
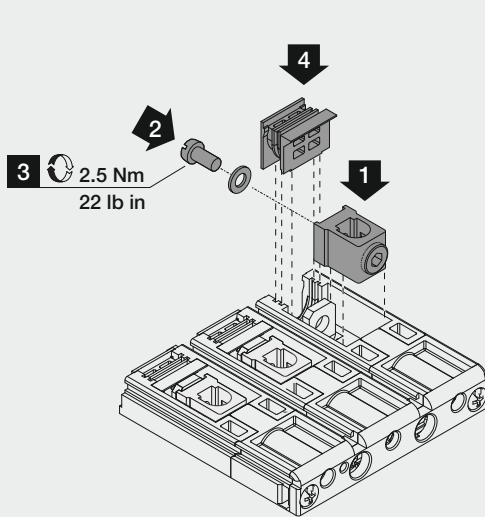
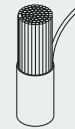
Cu-Al
Flexible



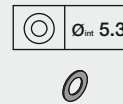
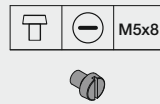
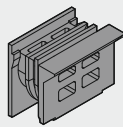
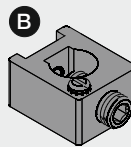
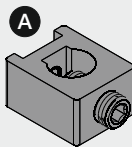
XT2	MAX	95 mm ²	MAX	70 mm ²	1 mm ² ...25 mm ² = 4 Nm / 35.4 lb in
	MIN	1 mm ²	MIN	2,5 mm ²	35 mm ² ...95 mm ² = 6 Nm / 53 lb in
XT4	MAX	150 mm ²			
	MIN	1 mm ²			1 mm ² ...150 mm ² = 10 Nm / 89 lb in



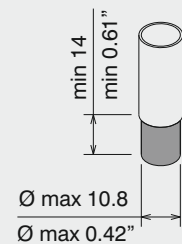
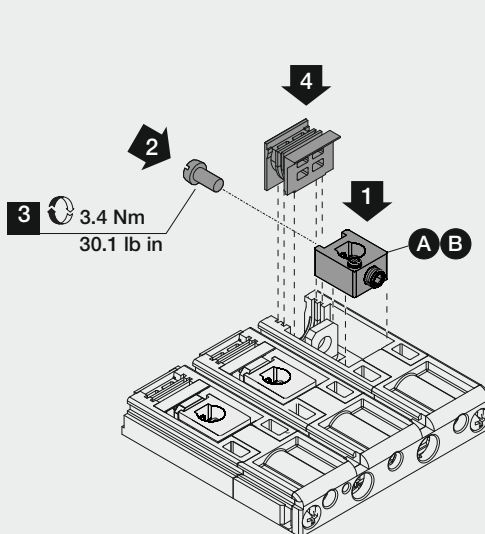
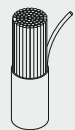
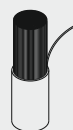
III	3(6)	3(6)	3(6)	3(6)
IV	4(8)	4(8)	4(8)	4(8)

Cu-Al
StrandedCu-Al
Flexible

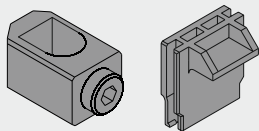
MAX 1/0 AWG		14 AWG - 8 AWG = 4.5 Nm / 40 lb in
MIN 14 AWG		6 AWG - 1/0 AWG = 5.7 Nm / 50 lb in
MAX 50 mm ²		2.5 mm ² ...6mm ² = 4.5Nm / 40 lb in
MIN 2.5 mm ²		10mm ² ...50mm ² = 5.7Nm / 50 lb in



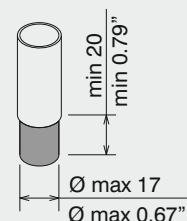
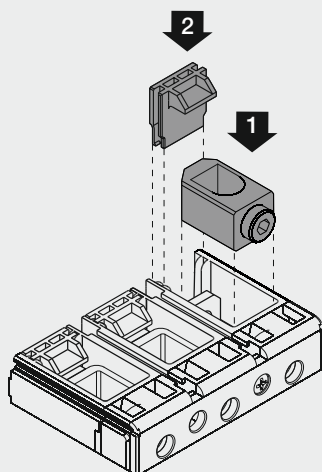
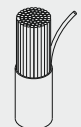
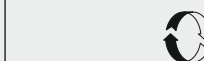
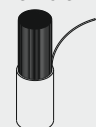
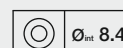
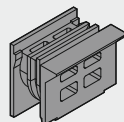
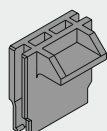
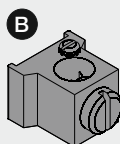
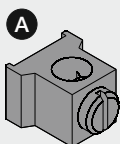
III	3(6)	3	3(6)	3(6)	3(6)
IV	4(8)	4	4(8)	4(8)	4(8)

Cu-Al
StrandedCu-Al
Flexible

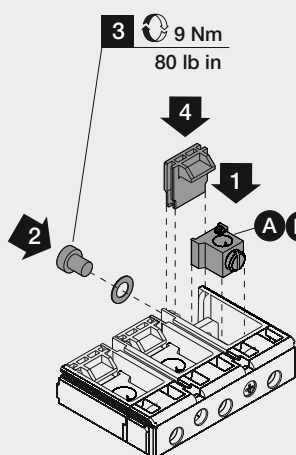
MAX 2/0 AWG		10 AWG...8AWG = 4.5Nm / 40 lb in
MIN 10 AWG		6 AWG...2/0AWG = 9Nm / 80 lb in
MAX 70 mm ²		4 mm ² ...6mm ² = 4.5Nm / 40 lb in
MIN 4 mm ²		10mm ² ...70mm ² = 9Nm / 80 lb in



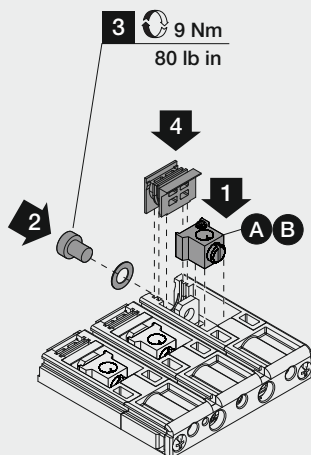
III	3(6)	3(6)
IV	4(8)	4(8)

Cu-Al
Stranded95mm²...185 mm²Cu-Al
Flexible95mm²...185 mm² = 16 Nm / 142 lb in

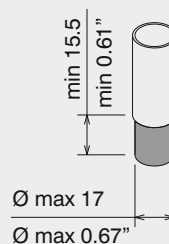
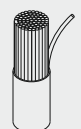
III	3(6)	3	3(6)	3(6)	3(6)	3(6)
IV	4(8)	4	4(8)	4(8)	4(8)	4(8)



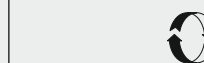
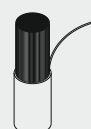
XT3



XT4

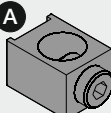
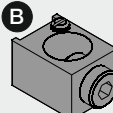
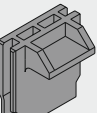
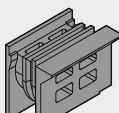
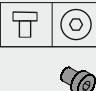
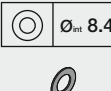
Cu-Al
Stranded

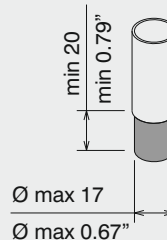
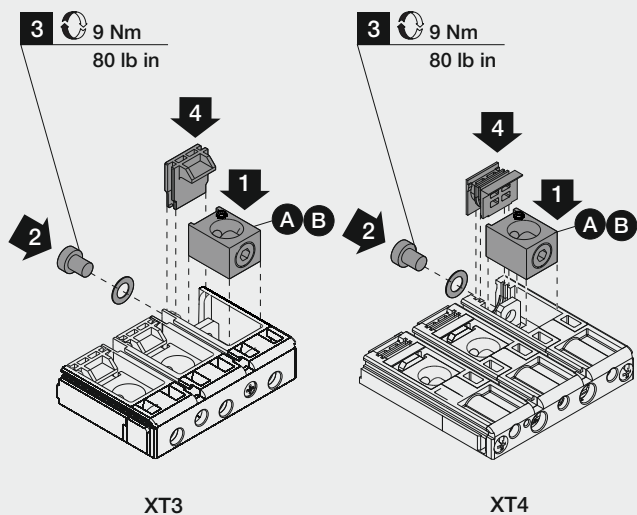
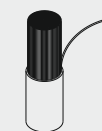
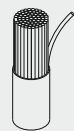
MAX 1/0 AWG
MIN 14 AWG
MAX 50 mm²
MIN 2.5 mm²

Cu-Al
Flexible

14 AWG...10 AWG = 2.3 Nm / 20.4 lb in
8 AWG... 1/0 AWG = 5.6 Nm / 50 lb in
2.5 mm²...6 mm² = 2.3 Nm / 20.4 lb in
8 mm²...50 mm² = 5.6 Nm / 50 lb in



						
III	3(6)	3	3(6)	3(6)	3(6)	3(6)
IV	4(8)	4	4(8)	4(8)	4(8)	4(8)

Cu-Al
StrandedCu-Al
Flexible

MAX 300 Kcmil
MIN 4 AWG

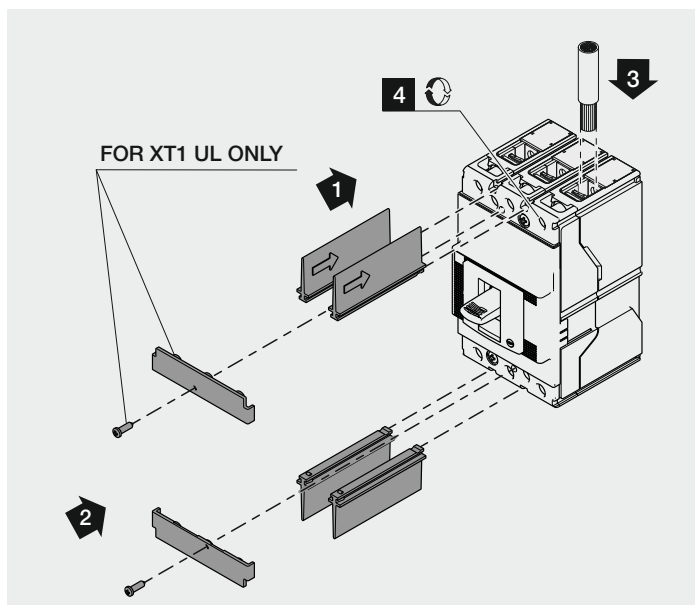
MAX 150 mm²
MIN 35 mm²

4 AWG...300 Kcmil = 22.6 Nm / 200 lb in

35 mm²...150 mm² = 22.6 Nm / 200 lb in

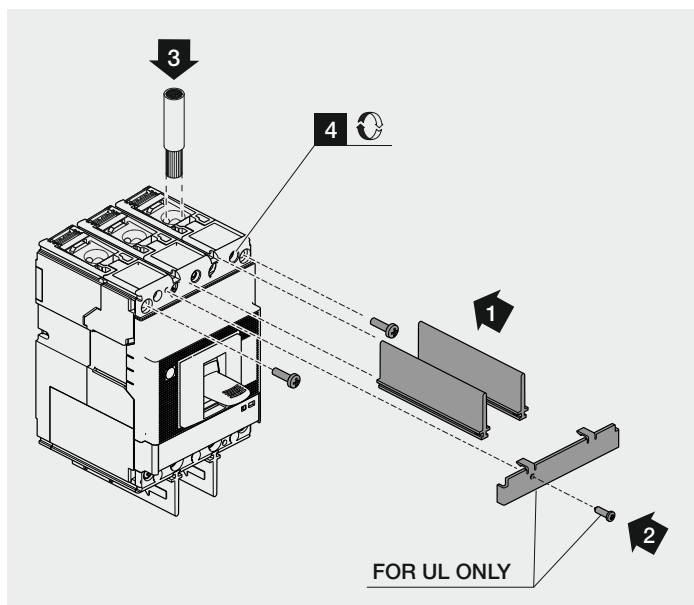
11

ONLY FOR XT1 - XT3 F

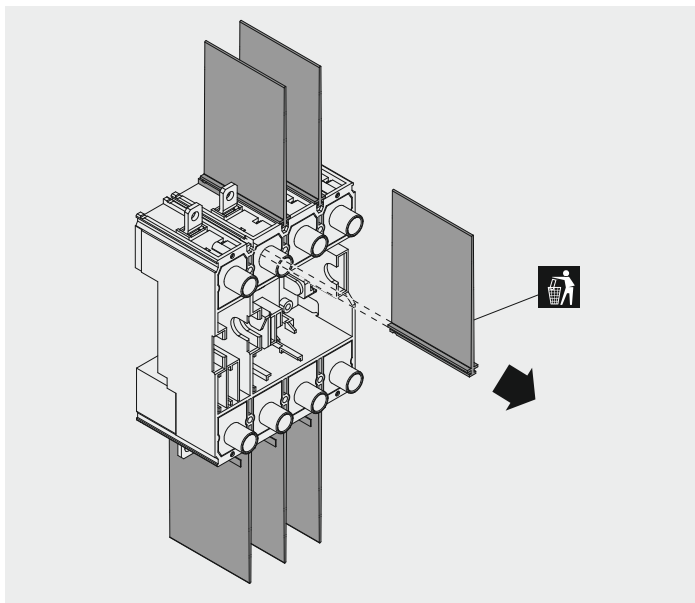


12

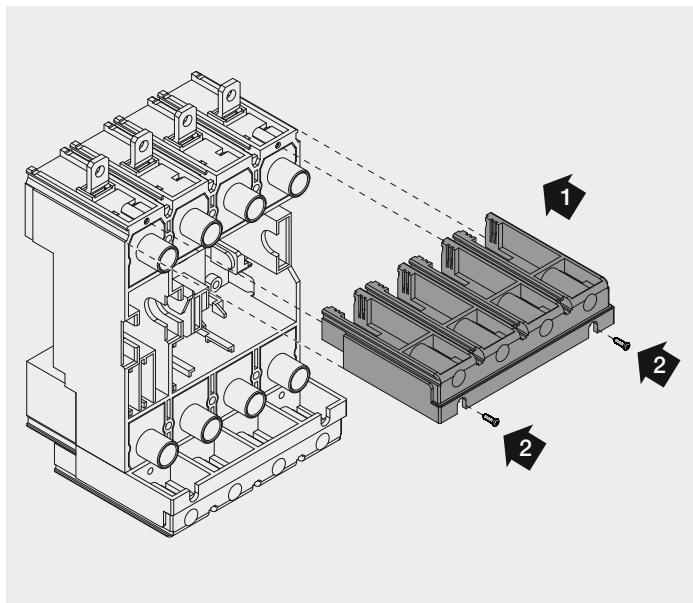
ONLY FOR XT2 - XT4 F



13



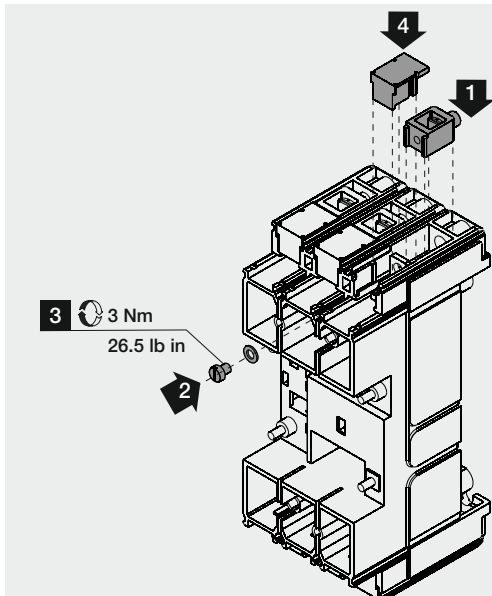
14



15

XT1-XT2-XT3-XT4 P-W

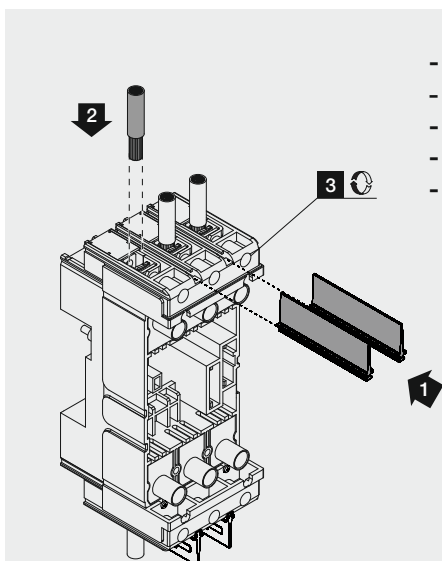
EXAMPLE FOR XT1 P



- Per l'installazione dei morsetti fare riferimento all' interruttore fisso
- Refer to the fixed circuit-breakers when installing the terminals
- Für die Installation der Klemmen ist Bezug auf die festen Leistungsschalter zu nehmen
- Pour la mise en place des bornes faire référence aux disjoncteurs fixes
- Para la instalación de los bornes véanse los interruptores fijos

16

XT1-XT2-XT3-XT4 P-W



- Per le coppie di serraggio fare riferimento agli interruptori fissi
- Refer to the fixed circuit-breakers for the tightening torque values
- Für die Anzugsmomente ist Bezug auf die festen Leistungsschalter zu nehmen
- Pour les couples de serrage faire référence aux disjoncteurs fixes
- Para los pares de apriete véanse los interruptores fijos

For more information please contact:

ABB S.p.A.

Via Pescaria, 5

24123 Bergamo - Italy

Phone: +39 035 395 111

© Copyright 2010-2019 ABB. All rights reserved.
www.abb.com

