

SACE Tmax XT

FC CuAl - Terminali anteriori per cavi in rame - alluminio 240mm² XT1-XT2-XT3-XT4

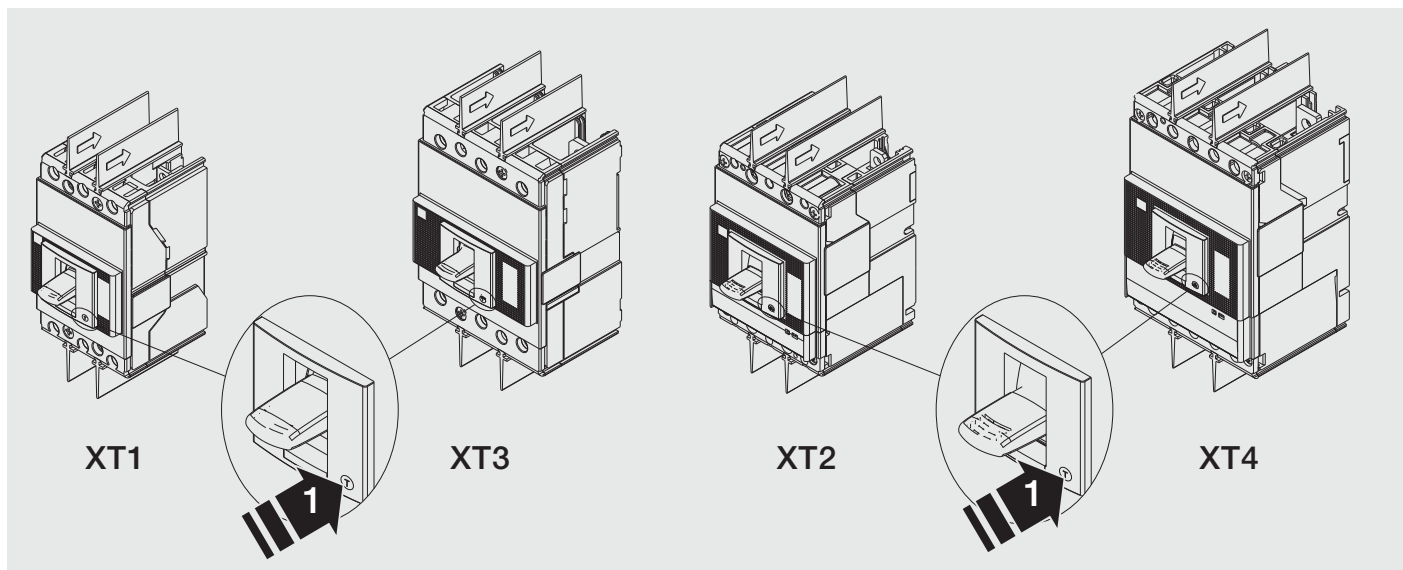
FC CuAl - Front terminals for copper-aluminum cables 240mm² XT1-XT2-XT3-XT4

FC CuAl - Vorderseitige Anschlüsse für Kabel aus Kupfer - Aluminium 240mm² XT1-XT2-XT3-XT4

FC CuAl - Prises avant pour câbles en cuivre - aluminium 240mm² XT1-XT2-XT3-XT4

FC CuAl - Terminales frontales para cables de cobre - aluminio 240mm² XT1-XT2-XT3-XT4

XT1-XT2-XT3-XT4



XT1							
III	1(2)	1(2)	1(2)	/	/	/	/
IV	/	/	/	1(2)	1(2)	1(2)	1(2)

XT2							
III	1(2)	1(2)	1(2)	/	/	/	/
IV	/	/	/	1(2)	1(2)	1(2)	1(2)

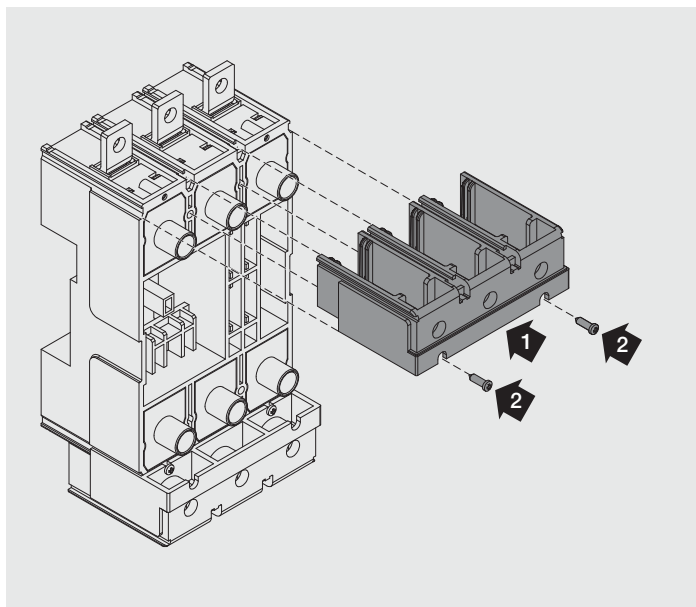
XT1			XT3		XT4	
III	2	2	III	3(6)	III	3(6)
IV	2	2	IV	4(8)	IV	4(8)

XT1-XT2-XT3-XT4				
III	1(2)	1(2)	1(2)	/
IV	1(2)	/	/	1(2)

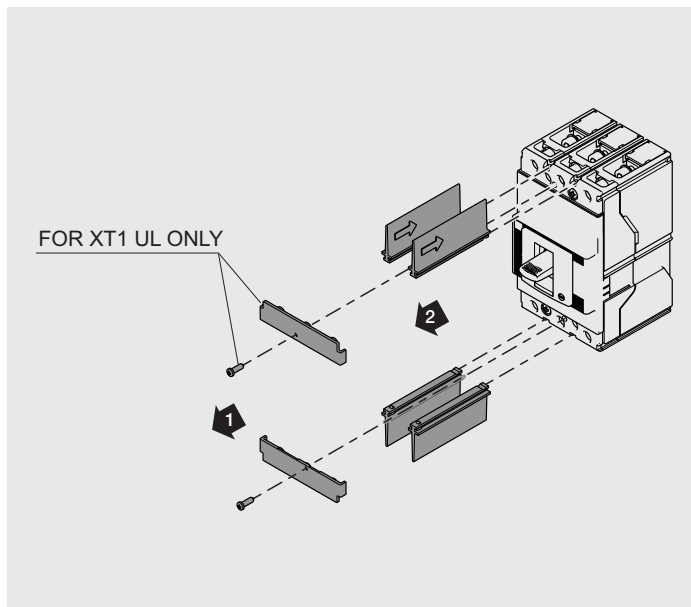
XT1-XT2-XT3-XT4			
ON REQUEST (P-W ONLY)	III	1(2)	/
	IV	/	1(2)

A

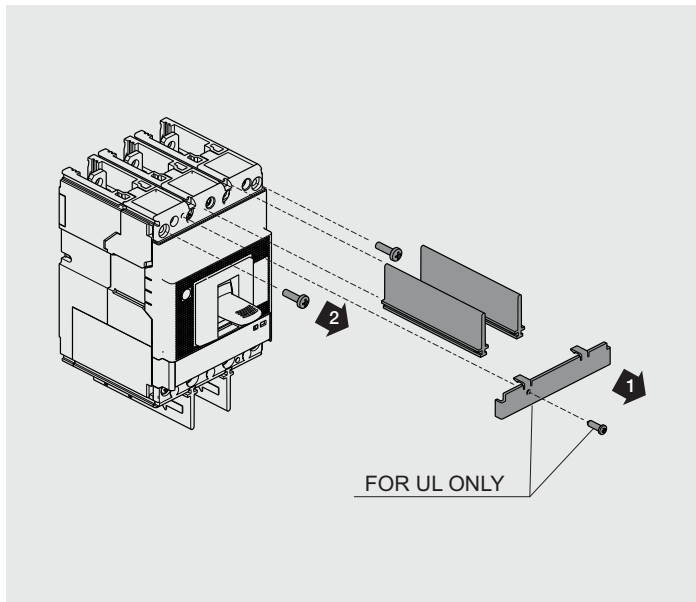
P-W ONLY

**B**

ONLY FOR XT1 F - XT3 F

**C**

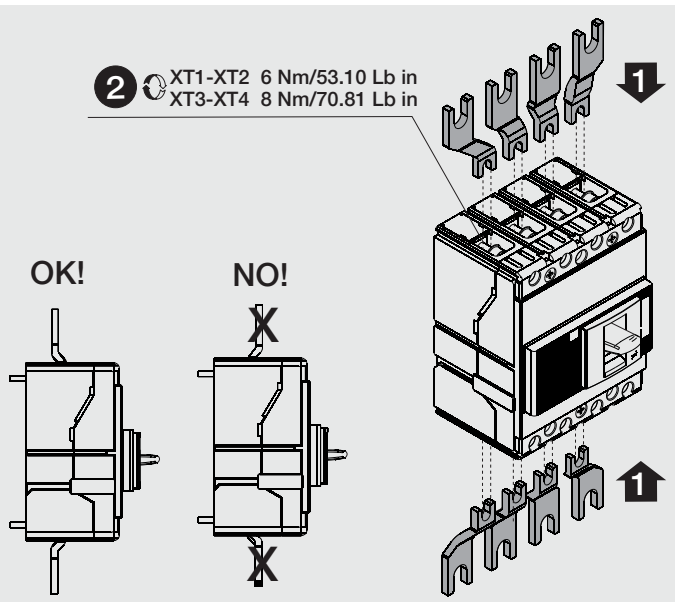
ONLY FOR XT2 F - XT4 F

**D**

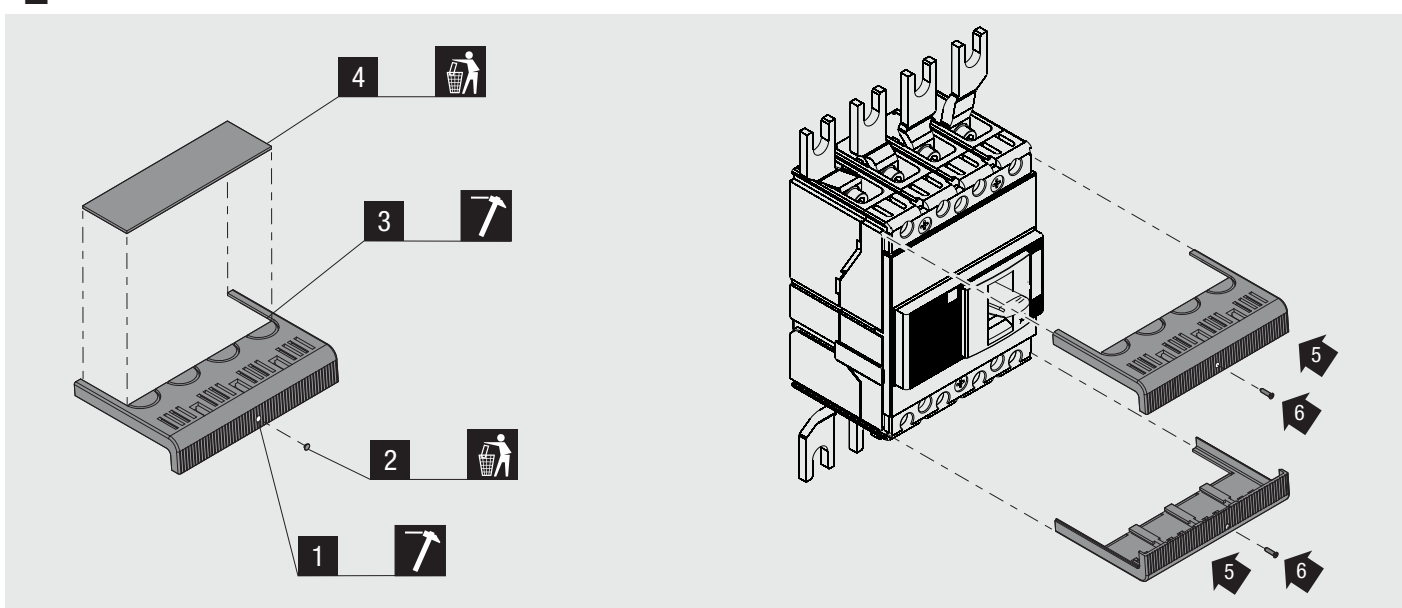
2 XT1-XT2 6 Nm/53.10 Lb in
XT3-XT4 8 Nm/70.81 Lb in

OK!

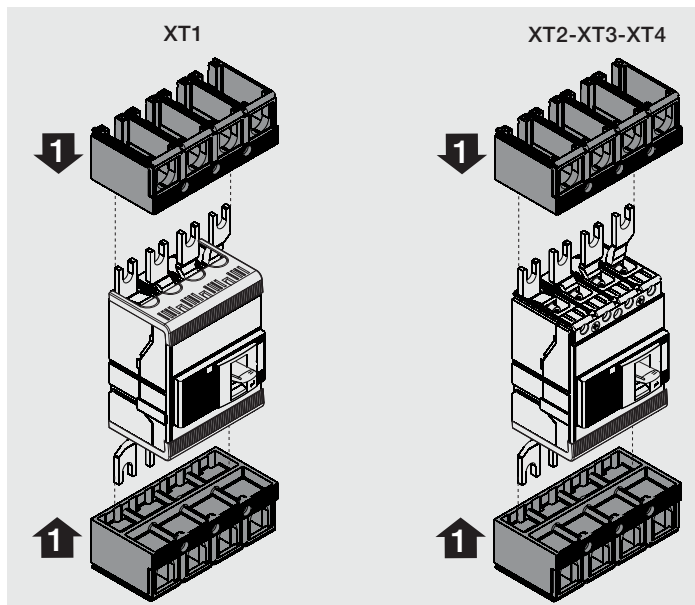
NO!

**E**

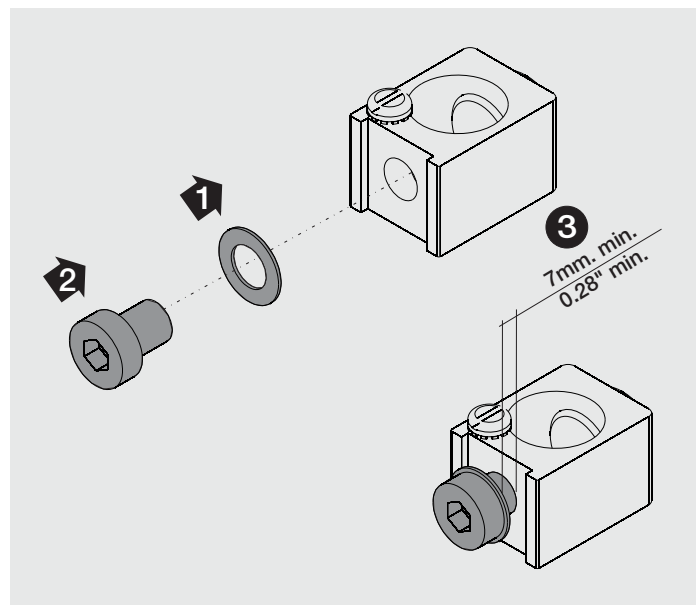
ONLY FOR XT1 F



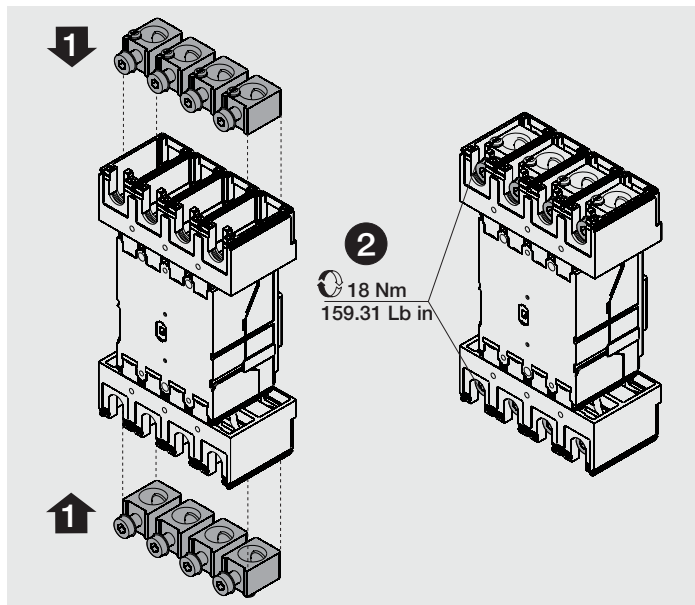
F



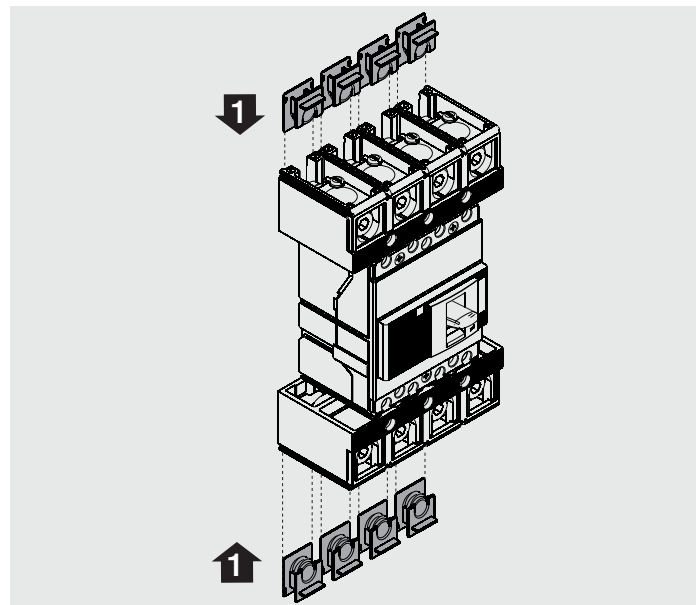
G



H



I

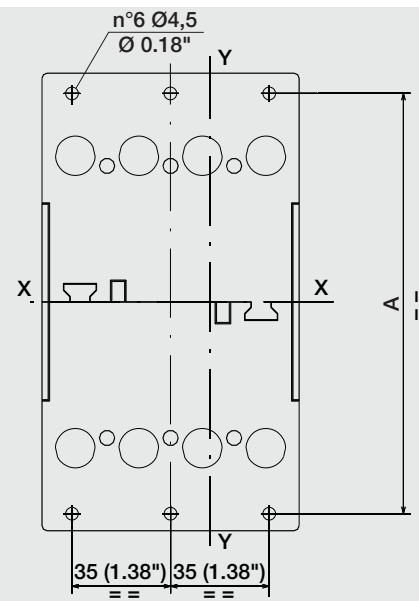
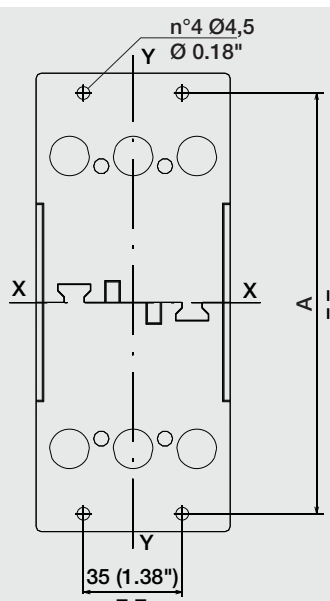


J

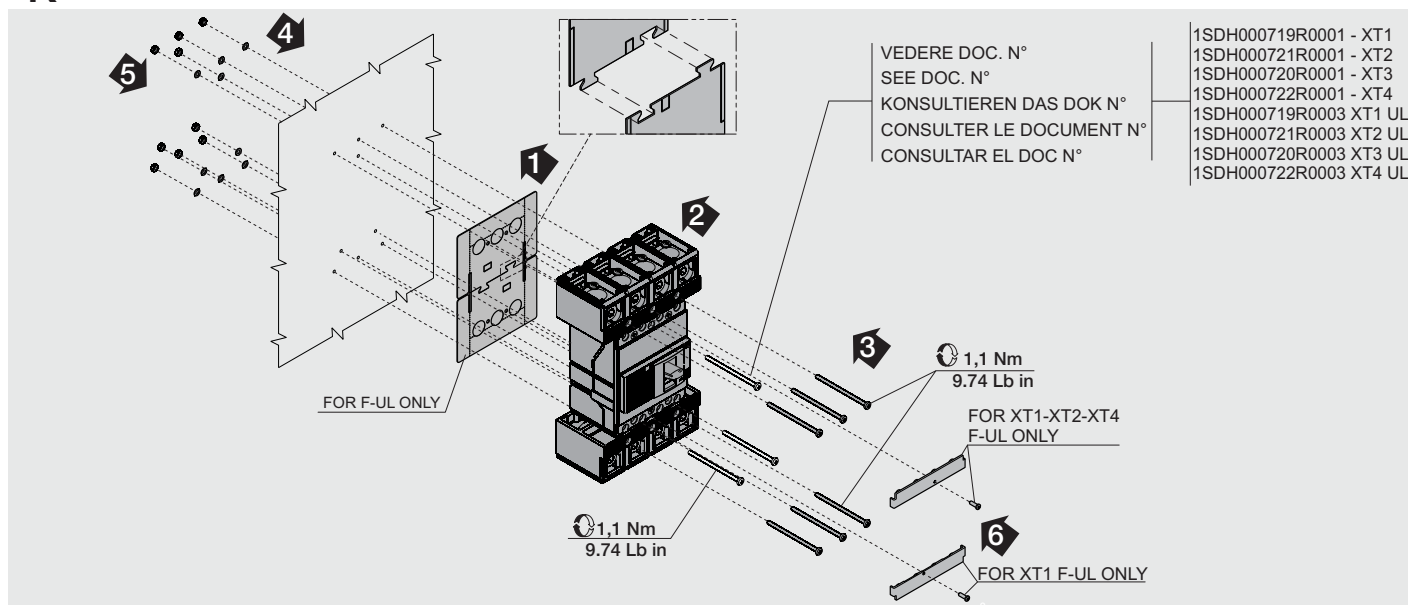
ONLY FOR F

Forare la piastra di isolamento
Make holes in the insulation plate
Isolierplatte anbohren
Perçer la plaque d'isolation
Taladrar la placa de aislamiento

	A
XT1	153 (5.87")
XT2	149 (5.87")
XT3	169 (6.65")
XT4	179 (7.05")

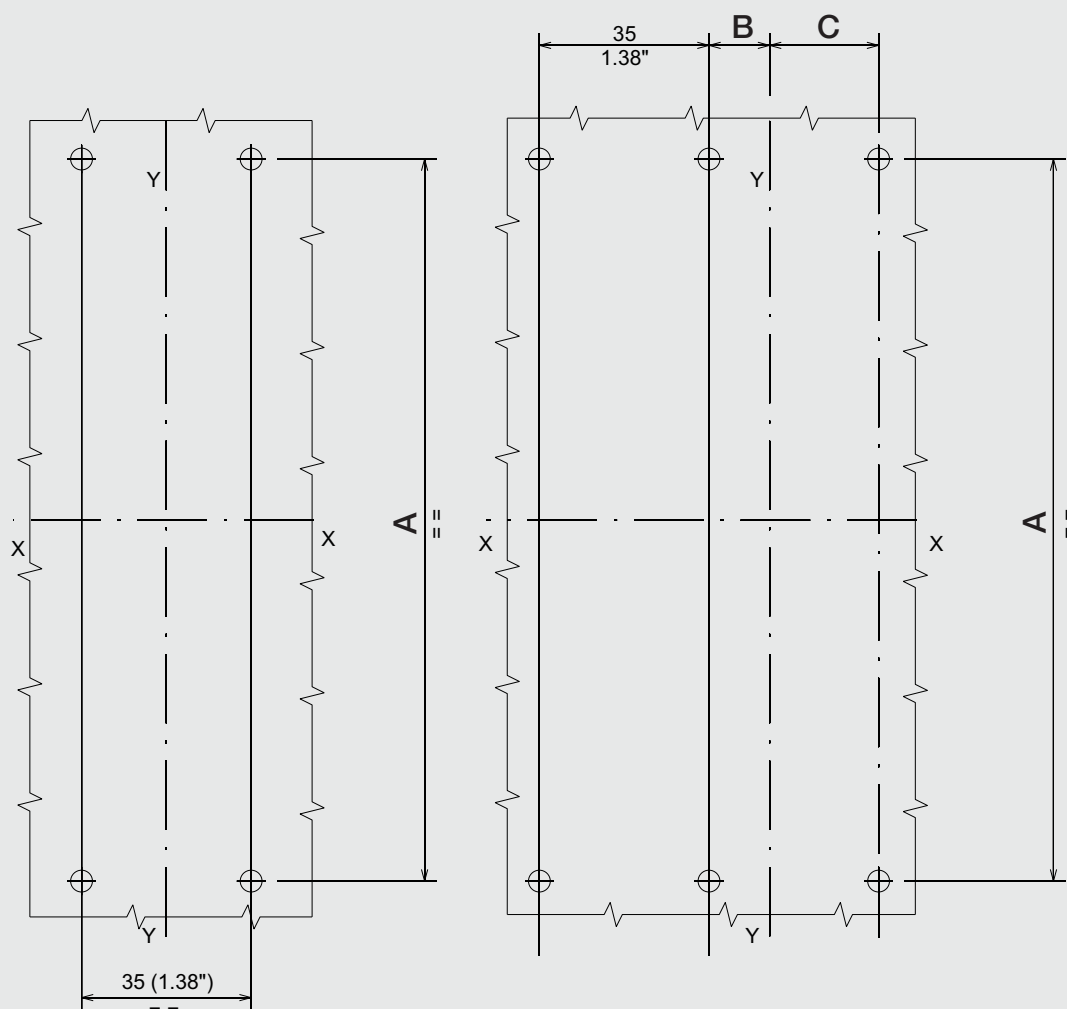


K

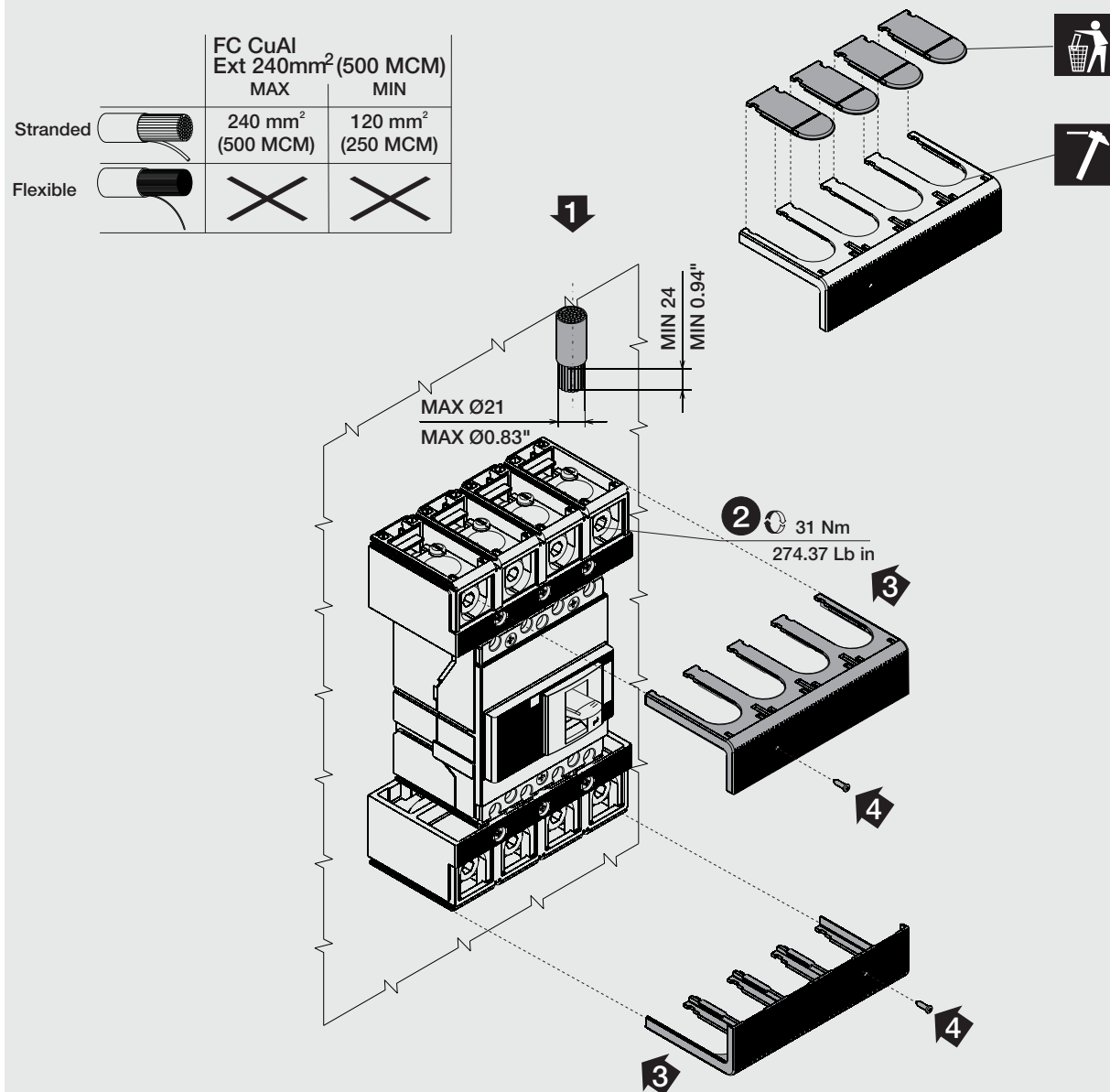


L

F-P-W



	A		B	C
	(F)	(P-W)		
XT1	153 (5.87")	200 (7.87")	12,5 (0.49")	22,5 (0.89")
XT2	149 (5.87")	207 (8.15")	15 (0.59")	20 (0.79")
XT3	169 (6.65")	244 (9.61")	17,5 (0.69")	17,5 (0.69")
XT4	179 (7.05")	247 (9.72")	17,5 (0.69")	17,5 (0.69")



For more information please contact:

ABB S.p.A.

ABB SACE Division

Via Pescaria, 5

24123 Bergamo - Italy

Phone: +39 035 395 111